

# The Geraldine News

Ngä Pükörero o te wiki ki Raukapuka

ESTABLISHED 1992

THURSDAY 23 NOVEMBER 2017

3605 copies delivered each week



### ENTERTAINMENT

Saturday 25 November

## THE SOUTHERN MAN XMAS FUNCTIONS

We cater to suit your budget  
Ph Gerard 03 693 1004

---

### SUPER SONIC BOTTLE STORE SPECIAL

Stil Vodka 1L **\$31.99**  
Pasqua Magnums **\$14.99**  
Wed – Sat only  
**Ph 693 1033**



### FRESH LAMB LEG ROASTS

\$11.99/kg

### FREE-RANGE PORK LEG ROASTS

\$7.99/kg

---

**Order now for Xmas:**  
Free-range hams and turkeys

Like us on Facebook

6 WILSON ST, GERALDINE ♦ PH 693 8538

## “Try us, you’ll be pleased you did”

L J Hooker Geraldine  
16 Talbot St, Geraldine  
Ph 03 693 9775, Fax 03 693 9774  
geraldine@ljh.co.nz  
geraldine.ljhooker.co.nz

AJ Ramsay Real Estate LTD, Licensed Real Estate Agent (REAA 2008)





## ELECTRICAL

**MOBILE 027 2009619**  
38 Sherratt Rd, RD 21,  
Geraldine  
AH. 03 693-9124  
FAX 03 693 7420

## Combined service of 158 years combined service to the high school

A large chunk of institutional knowledge, wisdom, experience and dedication was farewelled by Geraldine High School (GHS) last week.

Mark Romans, Shirley Lindroos, Simon Keeley, Doreen Callow, Peter McCaskill and Richard Ramsay have 158 years of combined service to the high school. They were recognised and thanked at a function put on by the school’s Board of Trustees.

Current and former staff and invited guests heard glowing tributes to the leaving teachers, and the leavers themselves had the chance to reflect on their time at GHS. They each referred to the absolute importance of their relationships with students and colleagues to their ability to perform their duties as teachers.

Principal Simon Coleman said that the loss of the six teachers who have over 150 years of passion, dedication and service to Geraldine High School had been a big consideration over the last three months as the school looked at appointing new staff.

“You cannot replace the wisdom and school culture that our leaving staff have,” said Simon. “But at the same time it presents a new and exciting opportunity to have staff with viewpoints from other schools along with fresh ideas, different skill sets



Retiring high school teachers at last Friday evening’s farewell, from left, Mark Romans, Shirley Lindroos, Simon Keeley, Doreen Callow, Peter McCaskill and Richard Ramsay. Photo: Marg Braggins.

and perspectives that will further add to the from 2018.” opportunities that our students will receive

Neil Wilson

## Local golfers win prestigious trophy

The Geraldine District Golf Club won the Aorangi Champion of Champions Gross Stableford Rosebowl last month.

Paula Goodman, Ginny Bolderston, and Roz Hobbs accumulated 121 stableford points in the testing 36-hole gross format at the Lower Waitaki course. Each of the clubs in the Aorangi region was entitled to send a three-person team to the tournament. The members were the silver (senior) champion, and the bronze 1 (intermediate) champion and runner-up.

Ginny laid a solid foundation for the team’s victory by taking out the Silver (senior) overall gross trophy with an impressive two-round tally of 153. Her team-mates Paula and Roz also played solidly to secure the prestigious Gross Stableford Rosebowl for the Geraldine District Golf Club.

Outgoing ladies’ captain at the club, Fiona Blake, said: “We’ve won this important trophy a few times in the past and it’s a great thrill. It’s always very satisfying to win against the cream of the region’s golfers.”

Neil Wilson



Paula Goodman, Ginny Bolderston, and Roz Hobbs. Photo: Supplied.

### Jennian Homes Mid & South Canterbury

Timaru Office & Show Home  
23 Hunter Hills Drive  
Timaru

Ashburton Office & Show Home  
8 Whiteoak Grove  
Ashburton

T 0800 JENNIAN E salesmsc@jennian.co.nz  
OPEN Monday to Friday 8:00am - 5:00pm or by appointment  
OPEN Sunday 12:00pm - 3:00pm or by appointment

## Jennian

HOMES

Your personality Our expertise

0800 JENNIAN [jennian.co.nz](http://jennian.co.nz)



**THE BREWERY**  
Geraldine

Sunday 10th December  
**Valley Brewery Challenge**  
**“DOG TRIAL”**  
Come and watch the best at work!

Open 7 Days from 9am  
Night Dining—Friday & Saturdays  
NOW OPEN EXTENDED HOURS ON SUNDAYS  
Phone (03) 697-4959

**EARTHWORKS AORAKI LIMITED**

**CONCRETE PIPE**  
300mm – 1200mm  
Price available upon enquiry

Call today to order before they're all gone!  
**0800 693 000**  
enquiries@earthworksoraki.co.nz

**PATTERSON PLUMBING DRAINLAYING GERALDINE**  
*Mark Patterson*

**Are you affected by the January 1st 2020 Geraldine wood burner deadline?**

We can help with:  
TDC building consents  
Wood burner supply & installation  
TDC final inspection

For more info about a new log burner call us today:  
PHONE 03 693 9625  
MOBILE 0274 353 657  
23 GEORGE ST. GERALDINE  
Agents for **metrofires**

**CONTACT US**

**NEW EMAIL ADDRESS:**  
**admin@geraldinenews.co.nz**

Requests for submitted articles: phone *The Geraldine News* at least two weeks prior to event. Usual deadline for all items: Noon Mondays. Agents: Geraldine Resource Centre. Advertising costs: Classifieds: 50c/word. Display ads: contact us for details or see the website [www.geraldinenews.co.nz](http://www.geraldinenews.co.nz). While every effort is made to ensure the accuracy of information in this publication, *The Geraldine News* does not accept any responsibility for errors or omissions or for any consequences arising from reliance on information published. The content of submitted material is not necessarily endorsed by the owners. The editor reserves the right to make final decisions on layout of submitted ads. Copies can be bought and we have a subscription service.

**Ph 0800 693 800**

# Pinnacles Hut ‘good to go’

Popular Department of Conservation (DOC) huts have regular supply schedules to ensure the backcountry refuges are welcoming and healthy.

Pinnacles Hut, in the shelter of 90-million-year-old rhyolite cliffs on the Mount Somers Track was resupplied recently in an operation involving a week’s worth of planning, many DOC and voluntary personnel and a full day’s helicopter activity.

“We flew in a pump unit and flew eight tanks of waste out from the longdrop,” says Geraldine DOC office recreation supervisor Chris Dyson. “We also flew in one tonne of coal and enough wood for the year, donated by Barry Austin of the Mount Somers Walkway Society. Most of it’s in rounds and trampers cut it up to burn.

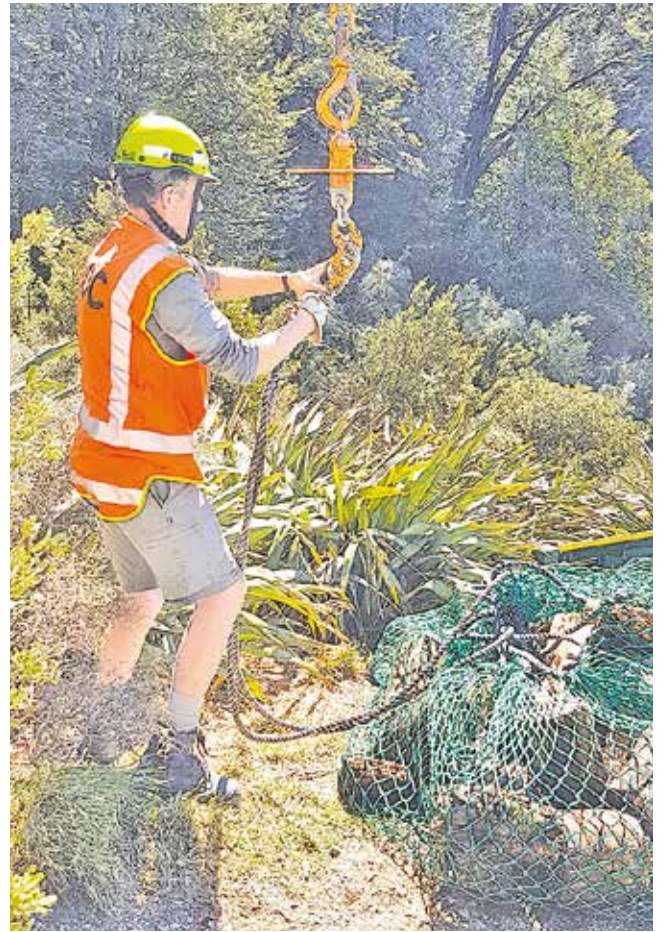
“There were four DOC staff, four volunteer hut wardens and some Mount Somers Walkways Society members. The helicopter was on the go all day. We also put an aerial on the hut roof to improve radio coverage for the wardens and resupplied food and gas to wardens. It was probably our biggest day – it took a week to organise – and a cool team effort.

“The hut’s good to go for the season.”

Pinnacles Hut is a 19-bunk serviced hut approximately three-and-a-half hours’ walk from the Staveley end of the Mount Somers Track. For more information, go to [www.doc.govt.nz](http://www.doc.govt.nz) or contact DOC’s Geraldine office on 693 1010.

Jan Finlayson

Right: Tom Waterhouse, a recreation ranger from DOC’s Oamaru office, led a team of staff and volunteers resupplying Pinnacles Hut with coal and wood. Photo: Jan Finlayson.



## WHAKAARO: Local sports exploits covered here

From 8 December, South Canterbury’s major print media looks set to turn a corner, but not necessarily one that will have the support of the people. The big corporations have spoken and the *Timaru Herald’s* two Fairfax-employed sports writers have been made redundant.

According to soon-to-be-out-of-work senior sports writer Stu Piddington, the sports news we will read about in South Canterbury’s largest paper is likely to have less local flavour. Instead, the news will come out of the major centres and the focus will be at national level. Sure, we’ll still get to read about the feats of South Canterbury internationals

Tom Walsh, Natalie Rooney and Hayden Paddon, but the odds of a story on the meteoric rise of Geraldine’s grassroots senior rugby team are looking significantly slimmer.

This is why we need to ensure our smaller papers hold tight to their values and remember who we are and what we’re about. Not everyone is interested in sport, but nobody can deny it plays a significant role in the Geraldine community and we need to celebrate the success of our sportspeople, whether that be up-and-coming hockey player Tim Sheed, New Zealand lacrosse representative Savanah McAtamney-Rasch or Mark Romans, rugby legend of years gone by.

It’s not going to be possible to cover every code every Saturday and publish a weekly blow-by-blow account of every match, but *The Geraldine News* says it is committed to sharing the success stories and the exploits of our local sporting teams, sportspeople and sporting officials. But it’s up to the readers to help us out.

If you have a sporting story, please share it with us by emailing [admin@geraldinenews.co.nz](mailto:admin@geraldinenews.co.nz) or calling 0800 693 800. Our chance to read about locals achieving great things in the big papers may be reduced, but let’s make sure we still have this option with *The Geraldine News*.

Pip Goldsbury

**E & M Gifts**  
New Drop-Off Point  
E & M Gifts • 40A Talbot St

**DESIGNS & FRAMING**  
LIKE IT - FRAME IT - LOVE IT  
199 STAFFORD STREET, TIMARU • 03 688 0438  
We will pick up your work, frame it to perfection and return it to Geraldine

**Allen Custom Drill 3000**  
**Salford Field Cultivator**

- ALLEN CUSTOM DRILL 3000**
- Triple Disc – 125mm rows
  - Self-loading crane, 1 tonne
  - Harrows
  - Electronic slug bait and insecticide applicators

**SOLA PROSEM K 12-ROW PLANTER**

- For fodder beet, swedes and maize

- SALFORD FIELD CULTIVATOR**
- Six metres
  - Chisel shanks followed by a three-row harrow that is rake adjustable
  - Spiral roller
- YEOMAN PLOW**
- Three-metre subsoiling for aeration of compacted soils

Operating this season:  
South Canterbury and Mid Canterbury



**Malcolm Wooding**

P 693 8012

M 027 654 0352

E [wooding@ruralnet.co.nz](mailto:wooding@ruralnet.co.nz)

For enquiries and bookings contact Malcolm

**Verde CAFE DELI**  
Indoor & outdoor dining  
**open 7 days**  
BEHIND OLD POST OFFICE

**NEED TO MOVE SOME DIRT? BIG OR SMALL, WE MOVE IT ALL!**

**Our services include**

- Trenches • Siteworks • Building foundations • Vegetation clearing/control • Landscaping
- Cleaning out dairy sheds
- Certifying drainlayer

**CALL US TODAY**  
Denys - 027 686 2237  
Jared - 027 277 9519  
or 03 692 2963 (ah)

**ALL-IN-ONE EXCAVATION**



# Geraldine Arts & Plants Festival 2017



These visitors from Hong Kong bought a dozen jars “ for souvenirs and for health,” they said, of Waihi Gorge Honey’s first season’s output. Richard Hamilton from Waihi Gorge Honey said that they had almost sold out of their first 30 boxes of honey by lunchtime and were waiting on a top-up from home. Photo: Marg Braggins.



Lyn Holmes, Judy Berry and Petrina Beaumont, staff members at the Geraldine Pharmacy were kept busy on Friday’s Boulevard Day. Peter Shenoda, the pharmacist, said that Arts and Plants brought more people out around town and that meant more shoppers in stores. Photo: Marg Braggins.



Nicky Taylor, from Stoneyhurst Creations on Tripp Settlement Road, fashions home-warens from wood originally sourced from old cattle and sheep-yards. Nicky has been in business for just over a year and has used up her original supply of re-purposed yard timber. Photo: Marg Braggins.



Geraldine artist Richard Bolton with his *Sheds, Seven Sisters Road*. The work won the open section of the Alpine Energy art exhibition, part of last weekend’s 2017 Geraldine Arts and Plants Festival. *Sheds* captures a moment when low-angled sun over the road to Pleasant Point fleetingly glorifies a group of ordinary old buildings. The open category was judged by Debbie Templeton-Page, Timaru sculptor and owner of York Street Gallery of Fine Art. Photo: Jan Finlayson.



The Drama Queens, from left, Sharleyne Diamond, Tracey Austin and Alice Sollis entertained the lunchtime crowd on the Village Green with their close harmonies and their classic repertoire. Photo: Marg Braggins.




Geraldine peonie grower Steve Sample at Friday’s Arts and Plants Festival boulevard day. The street-market occasion had a buoyant feel, he said. “There’s plenty of space, there are good crowds, and business is good. It’s the Jacinda effect - I think everyone’s pretty happy.” Photo: Jan Finlayson.




## Conventional bales FOR LIFESTYLE BLOCKS

If you need baled and wrapped conventional bales of grass, hay or lucerne, our Massey Ferguson 1840 Baler and Pomi 100 Wrapper do a perfect job.

**It's never too early to book!  
Call Gerald today on  
027 4977 299.**



0800 693 7377 or 03 693 7377  
1 St Andrews Street, Geraldine  
extramile@woodleys.co.nz  
[www.woodleys.co.nz](http://www.woodleys.co.nz)





## GERALDINE TIMBER PRODUCTS AND Quality JOINERY



**Paul Antridge** 27 High Street, Geraldine  
Ph/Fax 03 693 9598 Mobile 0274 750 887  
[geraldinetimberproducts@xtra.co.nz](mailto:geraldinetimberproducts@xtra.co.nz)



## ARE YOU READY TO DOWNSIZE?

Paying rates for a house that's too big?  
Paying maintenance and heating costs  
for space you don't use?

A move to one of our architecturally designed  
villas at McKenzie Lifestyle Village in  
Geraldine will cut those costs.

Three villas are available for occupation now,  
priced from \$355,000. Talk to David Connolly  
today on 03 693 8340.



M E M B E R O F R V A

# GROW YOUR OWN: It's swarm season

It's swarm season – but you can relax.

A healthy beehive this time of year is incredibly busy. The queen can lay 1,500 eggs a day. The worker bees are busy raising young, cleaning and working the hive and tending to the queen. When spring really kicks off, the temperatures warm and nectar begins to flow; pollen also becomes abundant. The workers head out to forage, bringing back hoards of pollen and nectar, and sending the queen into laying overdrive. Each day her nest expands, sometimes so much so that the brood can fill an entire brood box. As the brood matures, honeybees emerge from their cells in the thousands. Left unchecked, the boxes become full of bees. Beekeepers keep the queen confined to the lower brood boxes using a queen excluder. This ensures she can't venture up into the honey boxes and lay in that extra space. If she did, her eggs and larvae would contaminate the honey (not the sort of food you want on your toast in the morning).

Beekeepers ensure their hives have plenty of space for laying and they split them up early in the season before they become too full. If space isn't given to the colony at the right time, another form of reproduction begins – the production of swarm cells (a type of queen cell). The worker bees turn fertilised eggs that are destined to become worker bees, into queen cells. These cells are fed large quantities of royal jelly and are shaped differently to the worker cells. Once the swarm cell hatches, a new virgin queen emerges. Within a few days, the hive splits with a large number of bees following the queens out into the wild. The bees are leaving behind their honey stores so, before departing, they gorge themselves with honey. A full honey stomach keeps them very relaxed and they are quite docile when leaving the hive to cluster.

The queen decides where they will go. She usually settles somewhere close by to her original home for a short time. They surround her in a fluttering cluster. Watching a large cluster of bees is an extraordinary sight, and not something to be afraid of. After a while, the queen departs again to the final place she may have already chosen in the days leading up to her departure. The worker bees follow her.

Beekeepers carry out swarm-prevention techniques that are very successful, but if you find a swarm of honeybees don't call pest control: instead, call your local beekeeper or beekeeping club. By standing at a safe distance away from the bees, you can enjoy the spectacle before they fly away or are caught. The bees are relaxed, unless provoked. Beekeepers will gladly catch a swarm – it's a simple procedure as long as the swarm isn't located too high. By catching the swarm, the beekeeper is saving the colony. Honeybees are very unlikely to survive long in the wild, as they're overcome by varroa and disease; honeybees rely on beekeepers to keep them alive. The community can help by calling a beekeeper, should they spot a swarm, and by not harming the bees.

Rebecca Lees



A large cluster of bees which has left a hive with a queen.  
Photo:Rebecca Lees.



*This is Property Brokers' Country!*

## Anne and Graeme welcome Juliette to the successful sales team



**Graeme Duggan**  
027 490 1002



**Juliette Smyth**  
020 4031 9191



**Anne Weschenfelder**  
027 693 8116

[propertybrokers.co.nz](http://propertybrokers.co.nz)

Hastings McLeod Ltd MREINZ Licensed REAA 2008



# Repurposing of school house site

## “a really good move”

Carew Peel Forest School’s adjacent former schoolhouse site has been reinvented in line with a “vision map” devised by the children, says principal Kay Ward. “The house was removed a couple of years ago... As an EnviroSchool, the children are involved in designing the learning environment.”

Now, she says, the space is an “adventure area” with a bike pump track, hens, a range of gardens, a slackline (similar to a tightrope) and a pet paddock. “Ines [Geraldine landscape architect Ines Stäger] did the plan using the children’s ideas for the land.”

A few features of the old site, which had been off-limits to the children, remain. “We’ve retained the old garage, which we’ve repurposed as a caretaker’s shed, and we’ve kept most of the tall trees,” says Kay.

The pump track, a well-used circuit of bermed turns and whoops, was built by a local contractor – and former Carew Peel Forest student – with “a care code co-constructed by the children. It says they have to be prepared to help out with maintenance; they’re giving back.”

As well as keeping their bike facility up to scratch, the children are growing salad ingredients in a greenhouse and looking after fruit trees, strawberry and vegetable beds and brown shavers Ginger and Cinnamon. They’re also developing a shadehouse they’ll use to foster native plant seedlings.

“It’s fun,” says Lily (10). “I just like growing things and you can eat your own stuff.”



Ari Collins negotiating a berm on Carew Peel Forest School’s new bike pump track: part of the school’s redevelopment of its former school house site. Photo: Jan Finlayson.

“I like to grow things to eat for the family,” says Logan (11) and Matilda (8) says, “You can get food for free.”

Rian (10) says, “You can get your hands dirty and get things to eat; I just like gardening.”

A small, fenced-off space in the corner of the old schoolhouse site is “a pet paddock”, Kay says. “The plan is we’ll have lambs, baby calves... animals on loan, at this stage.”

From hosting a house to being alive

with children enjoying their self-planned space, the site’s transition has “been a really good move”, says Kay. “It’s opened up the playground and made some really good opportunities. There’s something for everyone here.”

Find out more about EnviroSchools at [www.enviroschools.org.nz](http://www.enviroschools.org.nz) or visit Carew Peel Forest School at [www.carewpeelforest.school.nz](http://www.carewpeelforest.school.nz).

Jan Finlayson



## NEWS IN BRIEF

### Letter

#### MP welcomes Easter Trading Bylaw

Timaru District Council has done the right thing by passing a bylaw that gives retailers the choice to open on Easter Sunday.

I’ve long championed this cause on behalf of retailers, particularly those in Geraldine who want to cater for the many tourists who visit over this period.

The Shop Trading Hours Amendment Act of 2016 was designed to give local communities the choice about Easter Sunday trading.

Timaru District Council undertook formal consultation to ensure a community-driven approach to the issue which was what the law change intended. This bylaw meets the needs of retailers and ratepayers alike, while giving the option for workers to either accept the extra hours or decide that they do not want to work on Easter Sunday.

I am pleased that Geraldine retailers can now make a decision that suits them, the town and its visitors.

Waitaki MP Jacqui Dean

### Results

#### POOL

Eight-ball pool teams from Geraldine Town and Country Club scooped in a raft of trophies at South Canterbury eight-ball Association’s annual prize-giving on 15 November. These were for teams’ competition over the season, between clubs from Oamaru to Ashburton.

In Division 2 the Geraldine Shunters (R O’Connor, A Couch-Snow, K Wooding, J Seaton, J Burgess, R Snow, C Snow, G Barnes) won the six-person singles competition and were over-all runners-up in both four and six-person competitions. In Division 1 the Geraldine Crusaders (S Snow, T Burnett, J Burnett, L Burnett, R Seaton, G Cox, G Snow) won the four-person competition, won the six-person pairs and were six-person runners-up overall. Individual successes also recognised on the night were: Lydia Burnett, 2017 Ladies Singles and Open Juniors Champion; Julia Burnett, Ladies Singles Plate winner, James Burnett, Open Juniors Runner-up. Geraldine Crusaders’ captain, S Snow, picked up a notable double by winning the Golden Cue trophy for highest average wins throughout the season, as well as the Burnett-Snow trophy for most eight-ball clearances during the season.

#### BRIDGE

**Wednesday 15 November.** North/South: L Peacocke & M Murray 62.50%, A Numan & F Numan 58.33%. East/West: D Wadman & W Wadman 68.75%, R Howie & S Rinaldi 60.42%.

**Thursday 16 November.** Christmas Handicap Pairs 2. North/South: S Craig & A Giles 59.93%, A Matthews & L Graybill 59.86%, A Bragg & V Hill 57.56%, East/West: T Andrew & P Rafferty 57.43%, P Kippenberger & M Bray 56.96%, N Neal & R Dewe 55.26%.

#### GOLF

**Grande Vue Golf Club.** Sunday 19 November. Closing Day Farnville Trophy – Combined Stableford: G A Patrick and M Lang 80, H Nelson and J Muff 71, D Stenhouse and W Patrick 71. G A Patrick, J Muff 41, M Lang 39, M Waldron, J Hay 38, V Patrick, M O’Malley 37, S Gately, W Patrick 36, T Kerr, D Stenhouse, Giles Patrick 35. Twos: Giles Patrick, J Hay. Nearest the Pin: Giles Patrick and S McShane.

### Master Electricians with a difference!

Totally Dependable Guarantee

**CALL TODAY  
03 693 9399**

Reliability counts. Trust us - we've got this.  
Highly skilled, locally based electricians 100% committed to meeting your expectations - first time, every time.

**Electrical Laser**  
GERALDINE BRANCH OPEN: MON-FRI 8AM - 5PM  
TEMUKA OFFICE OPEN: WEDNESDAYS 8AM - 5PM  
Laser Electrical 17 Peel St, Geraldine 03 693 9399  
Laser Electrical 44 Vine St, Temuka 03 615 6622  
www.laserelectrical.co.nz 0800 LASER 4 U (0800 527 374)

### GERALDINE PLASTERING LTD

RESTORATION SPECIALISTS

- Plasterboard Stopping
- Skim Coating
- Decorative Roses
- Grid Ceilings
- Plasterboard Installation
- Metal Stud Walls
- Decorative Cornices
- Suspended Ceilings

COMMERCIAL & RESIDENTIAL

TEL 03 693 7211  
[www.geraldineplastering.co.nz](http://www.geraldineplastering.co.nz)

In an emergency a St John medical alarm could make all the difference.

St John medical alarms support thousands of people to live independently in their own homes.

Our medical alarm connects people to St John via their telephone line 24/7

Contact: Gaynor Patterson  
Phone 693-9214  
or leave a message

Living Independently

St John first to care



## RECENT AGM / Hui ā tau - Nō nā tata nei

**GERALDINE** Bridge Club. President, Stan Rinaldi. Vice-president and treasurer, Leslie Graybill. Secretary, Caroline Law. Committee, Freerk Numan, Thea Andrew, Shirley Craig.

**ORGANISATIONS** may have their new committee members' names printed in this column for free if emailed to admin@geraldinenews.co.nz

## PUBLIC NOTICES / Pānui a whānui

**AQUA-FIT** classes start 28 November. Tuesday and Thursday 9.15am. Ph 021 0262 8622

## TRADES AND SERVICES / Mahi a ratonga

**ACCOUNTING** services, tax returns, book keeping, registered tax agent. Ph Raylene 693 7163, 027 274 3264.

**AUTO** parts and accessories. North End Motors, ph 693 8673.

**BROOKSIDE** Boarding Kennels. Farmstay for dogs. 208 Woodbury Road. Ph 693 9929.

**BUILDER** available for all building work. LBP licensed. Ph Andrew 027 341 8300, 693 8051.

**CLOTHING** alterations and mending. Ph 693 7163.

**DOUBLE** glazing enquiries. Ph Geraldine Glass 693 9927.

**FAULTY** sliding door rollers need replaced? Window catches no longer secure? We can replace these and get your house secure again. Ph Geraldine Glass 693 9927.

**HANDYMAN.** Repair and maintainence jobs around your home, garden, business. Monthly maintainance contract for business, rental, domestic customers. Please ph Ian 027 925 1411 email-ianrogers4@aol.com

**NATIONAL** superannuation gold card discount, 15% at Geraldine Auto Restorations. Ph 693 1401.

**PAINTER.** Geraldine-based. Friendly professional service, good rates, excellent local references. Ph 693 9803 or 027 962 4841.

**PERSONAL BRA FITTING** in your home or mine.  
Ph Jane Yeatman 693 7654 or 027 274 5243.  
[www.intimo.com.au](http://www.intimo.com.au)

**SHEARER** available to shear your small mobs, sheep, alpacas, goats. Ph Mike and Nicola 020 4011 7629.

**SPYWARE** /malware/virus removal. Geraldine Computer Solutions. Ph 693 9496.

**STEWARTS** Panel & Paint, 214a Talbot Street. Ph Stacey and Brook 693 8446 for all your panel and paint requirements.

**STUMP GRINDING SOLUTIONS** will be in your area soon. If you require our services to grind out those unwanted tree stumps and roots, ph Paul 021 232 3099 or 03 688 7244.

**TRAVEL** broker, Sue Hammond. Ph 693 9141. Email: [sueh@thetravelbrokers.co.nz](mailto:sueh@thetravelbrokers.co.nz)

## The Geraldine News Summer publication dates

**FINAL PAPER FOR 2017:**  
Thursday 14 December (deadline: 12pm, Mon 11 Dec)  
**FIRST PAPER FOR 2018:**  
Thursday 18 January 2018 (deadline: 12pm, Mon 15 Jan)



Do you need help with  
your workplace

## HEALTH & SAFETY

Not sure where to start?



We take the dagg's and effluent out of the Health  
& Safety at Work Act 2015.

Let us put together a PERSONALISED and  
COMPLIANT SAFETY MANAGEMENT SYSTEM  
for your business!

Our Goal is to:

- Ensure you understand the key responsibilities under the new Health & Safety legislation.
- Provide support and systems to ensure you achieve a safe and compliant workplace.



Colette Barrow  
021 246 8105 | [colette@ruralsafe.co.nz](mailto:colette@ruralsafe.co.nz)  
[www.ruralsafe.co.nz](http://www.ruralsafe.co.nz)

# GRAPHIC DESIGNER

**HANGING ROCK  
ROOST**  
03 615 5052  
021 314 048  
Vanessa Harper  
[hrockroost@gmail.com](mailto:hrockroost@gmail.com) | [hangingrockroost.co.nz](http://hangingrockroost.co.nz)

## GERALDINE PAINTING SERVICES

- Professional
- Friendly
- Reliable

KEN WILSON  
021-417-941

FREE  
QUOTES

## WANTED / Hiahia

**MILITARIA** wanted to buy by collector. Firearms, badges, bayonets or any items of military interest. German items are of particular interest. Ph Pete Young 693 8876 a/h.

## HEALTH AND WELL-BEING / Hauora

**FREE** mental health strategies. Strategies to help you feel good. Visit: [brucetelford.com](http://brucetelford.com)



## GERALDINE CHIROPRACTIC

DR. DOUG BRINSMEAD

B.App.Sc. (Chiropractic)  
Member NZ Chiropractic Assn

49 George Street, Geraldine  
Phone: 0204 0353 672



THE ORIGINAL  
AIR-CONDITIONED  
COTTON SHIRT  
Men's sizes to 4XL  
Women's to size 24

28 Talbot Street, Geraldine. Ph 693 7118.

## CRACKED WINDSCREEN?

SERVICING ALL RURAL COMMUNITIES IN SOUTH CANTERBURY

- ✓ Combined Service! - Fix Both Vehicle & Home Glass
- ✓ Direct billing to Insurance Companies
- ✓ TIMARU OWNED - No Remote call Centre



**Glass Specialists**

23 Theodosia St, Timaru. Call 0800 441-331



GERALDINE  
Mark Patterson

CERTIFYING PLUMBER - CERTIFYING DRAINLAYER  
PENSIONER RATES - FREE QUOTES  
NEW HOUSES - RENOVATIONS  
ALL DRAINAGE - DRAIN CLEANING  
REPAIRS & MAINTENANCE - SPOUTING  
APPROVED AGENTS OF **metrofires**  
LOG FIRE INSTALLATIONS

PHONE 03 693 9625  
MOBILE 0274 353 657  
23 GEORGE ST. GERALDINE



Just to let you know that 4 Peak Health is giving you the lead role in your health care through ConnectMed, our new patient-information system designed to help you connect with us more easily, quickly, at a time that suits you and in the way that suits you best.

So..

- You can now book appointments directly online in seconds, from anywhere, anytime
- You can request repeat prescriptions online
- You can send a receive messages about your care with your Health Team
- You can check all results of investigations (like blood tests) online anytime
- You can check if you need to book an appointment to stay well (review your treatment plan/ medications or update immunisations)
- You can review all your Clinical Notes to check that we share the same understanding of your care

To join takes a few minutes by joining up at  
[www.connectmed.co.nz](http://www.connectmed.co.nz)

Any enquires please email [4peakhealth@gmail.com](mailto:4peakhealth@gmail.com)  
Dr Kevin Moginie

## FOR SALE / Hei hokohoko

**GARAGE** sale, Saturday 25 November, 8am-12noon, no sooner please. Lewis Street (Geraldine), Household items.

**CHILLER** trailer for hire: \$65 per day, contact GRFC - Gerald Burke ph 027 498 6706.

**LAYING** hens. Brown shaver pullets, point-of-lay ie 18 weeks of age. Delivery possible. Ph/text 027 502 6569.



**FOR SALE / Hei hokohoko**

**GO-CART** motor, Honda. Two 10-speed tidy bikes. Old bottles. Ph 693 9016.

**QUALITY**  
**PEA STRAW**  
**\$50 BALE** **FOR SALE**  
**LINSEED STRAW**  
**\$40 BALE**

Call Hayden now  
to place your order &  
enquire about delivery  
on 03 6938553  
or 021 36 55 11

**haydenmackenzie**  
contracting

**PROPERTY / ACCOMMODATION** *Whare noho*

**VACANT** commercial space. 28 Wilson Street. 115m<sup>2</sup>, further enquiries ph 021 497 488.

**UPCOMING EVENTS / Mea pakiri haere**

**GERALDINE NEWS** deadline, noon on Mondays at Geraldine Resource Centre or email: admin@geraldinenews.co.nz.

**DECEMBER COMMUNITY DIARY.** To list an event or activity that is happening in November for your non-profit community organisation please phone the Resource Centre 693 7001 with details by Friday 24 November.

## GERALDINE COMMUNITY CHRISTMAS TREE 2017

at Geraldine Resource Centre

• Donations of gifts are now welcome to put under the Geraldine Community Tree - please wrap gifts and write the age & gender of who it would suit.

Thank you for helping to make Christmas a festive time for local families who are finding things tough this year.

Ph 693 7001 for any queries.

Cut off Date for gifts - Monday 11th December.



A joint project by Geraldine  
Lioness Club & Geraldine  
Community Resource Centre



## Christmas at Verde

Friday 15th December

Enjoy a night of delicious food, wine  
and great company

Bookings Essential 03 6939616

**Jacqui Dean MP for Waitaki**



If you would like an appointment with Jacqui in  
Oamaru/Waimate/ Geraldine/Fairlie/Tekapo/Ranfurly/  
Central Otago/Kurow or Twizel please phone our office.

### OAMARU OFFICE

127 Thames St, Oamaru 9400

P 03 434 7325 | 0800 MP WAITAKI

E waitaki.mp@parliament.govt.nz [www.jacquidean.co.nz](http://www.jacquidean.co.nz)

Funded by the Parliamentary Service and authorised  
by Jacqui Dean MP, 127 Thames, Oamaru

**National**



## Christmas at the Races

**Geraldine Trotting Club**

**Saturday 25 November**

**ORARI RACECOURSE**

First race 12 noon

Santa, Face Painting, Bouncy Castle

Geraldine Punters Club challenge - win \$1000

Fashion in the Field - great prizes to be won

General admission \$10

No BYO



## RELAY FOR LIFE LAUNCH GERALDINE 2018

Join us and help us celebrate the launch of Relay for Life!

Find out how you can be involved in this amazing event where  
we join together to Celebrate, Remember and Fight Back  
against cancer



**Sunday 26th November**

**4.30 - 6pm**

**The Running Duck, Geraldine**



[www.relayforlife.org.nz](http://www.relayforlife.org.nz)

For more information contact  
the Cancer Society on  
03 688 0124

Celebrate, Remember, Fight Back!



**GERALDINE DISTRICT GOLF CLUB (INC)**

**Annual General Meeting**

Monday 4 December 2017 at 7.30pm

Golf Clubhouse, Orari Back Road.

- Election of officers
- Presentation of reports

Max Bensemann, Secretary

## GERALDINE CINEMA

Cinema Ph: (03) 693 8118 *Country Hospitality at its best*

**Screenings from Thurs 23- Wed 29 Nov**

Judi Dench stars in this romantic  
moving film set in Holland  
**TULIP FEVER**  
(M) VIOLENCE, SEX SCENES

FRIDAY AT 5.45PM

SATURDAY AT 3.15PM

SUNDAY AT 6.30PM

Locally made, a moving story  
set against the Gold Rush era of  
the South Island. Featuring Stan  
Walker's new music single "Find You"  
**THE STOLEN**  
(M) VIOLENCE, SEXUAL REFERENCES, OFFENSIVE LANGUAGE

FRIDAY AT 8PM

SATURDAY AT 5.30PM

SUNDAY AT 4.15PM

**COMING SOON...**

- Another Mother's Son (30/11)
- My Little Pony Movie (7/12)

Back again for one final show!  
**NO ORDINARY SHEILA**  
(G) GENERAL EXHIBITION  
SATURDAY AT 1.15PM

Judi Dench, Johnny Depp, Kenneth Branagh  
and a host of great stars come together in  
Agatha Christie's famous story brought to  
the big screen in all its splendour!

**MURDER ON THE  
ORIENT EXPRESS**  
(M) ADULT THEMES

SATURDAY AT 7.45PM

SUNDAY AT 2PM



**Geraldine Cinema  
Movie Gift Vouchers**  
They make a great  
Christmas Gift!  
**On Sale Now!**

- Only The Brave (7/12)
- Star Wars The Last Jedi (14/12)
- Kiwi Christmas (TBA)

## SAVE 3 PEOPLE TODAY

Please join us at the blood drive:

**Tuesday 28 November**

**2.30pm to 6.30pm**

**Geraldine Primary School hall**

Appointments recommended

**0800 GIVE BLOOD**

[www.nzblood.co.nz](http://www.nzblood.co.nz)



**Go**  
**Geraldine**

## Go Geraldine Christmas Parade!

**Friday 1 December 2017**  
**from 6.30pm**

Bring a picnic for family entertainment in  
the Domain after the parade, food stalls and  
coffee available

Shop local for a chance to enter the Santa  
Sak competition. Entries in Geraldine shops.  
Great prizes drawn at the Domain after the  
parade. You must be there to win!

Float entries available at [www.gogeraldine.co.nz/events](http://www.gogeraldine.co.nz/events)

**Closing date for float entries is**  
**Friday 24 November**

Call 027 555 6524 for information

Go Geraldine and the Christmas Parade  
generously sponsored by:



PROUD TO SUPPORT THE GERALDINE COMMUNITY







RED  
HOT  
special

**\$11.99**  
kg

Fresh NZ Lamb Leg Roast

RED  
HOT  
special

2 for  
**\$5.00**

Fresh Cut Asparagus Bunched 250g



Christmas starts here

Don't forget to pre-order your  
**Christmas Turkey**

**\$4.00**  
ea

Whittaker's Chocolate Block 250g

**\$8.00**  
ea

Signature Range Mild/Colby/Edam Cheese 1kg

**\$4.80**  
ea

Signature Range Ice Cream 2L

4 for  
**\$6.00**

Wattie's Canned Fruit 400-420g/Canned Corn Kernel/  
Cream Corn/Beetroot 410-450g/Salad Beans 400g  
(Excludes Tropical)

**\$3.90**  
ea

Mediterranean Layered/Chunky Dip 135g

**\$29.99**  
pk

Export Gold/Tui/DB Draught/Speight's Gold Medal Ale/Summit  
24 x 330ml Bottles

**\$8.99**  
ea

Jacob's Creek Sparkling/Saints 750ml  
(Excludes Reserve)

**\$4.00**  
ea

Keri Fruit Drink/Juice 2.4-3L

## Win a Birthday cake!

If you know someone who deserves a special treat on their birthday,  
register their details in our Birthday Book at checkout.

Birth dates published in Geraldine News each week. Submissions close Monday at 11am.

This week's winner is:  
**Lauren Hanson**



**FreshChoice Geraldine**  
Peel Street, Geraldine.  
Open 7am - 8pm, 7 days.



FreshChoice.co.nz



FreshChoiceNZ



693 8529  
FreshChoice Geraldine

While stocks last at FreshChoice Geraldine only. We reserve the right to limit quantities.  
Trade not supplied.



Owned and  
operated  
by locals

