

The Geraldine News

Ngā Pūkōrero o te wiki ki Raukapuka

ESTABLISHED 1992

THURSDAY 10 NOVEMBER 2016

3595 copies delivered each week

WHERE THE FOODIES CHOOSE TO SHOP
PREMIUM QUALITY
GERALDINE BUTCHERY
MEAT & SMALLGOODS

CHICKEN DRUMSTICKS
Plain or Marinated
\$5.99/kg

FRESH LAMB LEG ROASTS
\$10.99/kg

ORDER NOW!
Your Christmas free-range ham and/or turkey

.....
All small goods made on premises.

6 WILSON ST, GERALDINE ♦ PH 693 8538

Harcourts
Geraldine

With you all the way.
When you need us.

PHONE 03 693 9005

Blackham & Co Real Estate Ltd. Licensed Agent REAA 2008

Village INN

CHRISTMAS FUNCTIONS

Book now for your Christmas function.
Set menus available to suit your budget.
Ph 693 1004

SUPER SONIC BOTTLE STORE SPECIAL:
Ballantines Whiskey
1L \$33.99
Wed-Sat only
Ph 693 1033



Community patrol supports Police

"Our job is to assist the police: to be a deterrent for criminal activity and to be extra sets of eyes and ears," says Geraldine community patrol chair Melanie Page.

Nationwide, the voluntary auxiliaries to local policing are well-proven, and, supported by local businesses, Geraldine has recently got on board with a patrol modeled on the successful example of Twizel, where "reported crime has gone down 50 per cent".

New Zealand's community patrols are involved in monitoring activity in public places and running police stations in small areas where stations aren't staffed full-time.

Active patrolling is already underway in town. Melanie says, "People go out in pairs, a couple of times a week, either in the community car or in private vehicles. There's randomness, but we'll also go where there's an event going on. We log in and out with police communications, and we record things we see, such as incidents, general community nuisance stuff like vandalism... and we report what we feel is appropriate to report. We can fast-track reports if we need to and always put in a written record, at the end of a shift, to Community Patrols of New Zealand and to our local police."

Vice-chair and volunteer coordinator Thea Andrew says, "We're working with Neighbourhood Support and the Timaru community patrol, which helps as they've been operating for over 20 years and have knowledge they're happy to share."

Rob Coleman is the South Canterbury Neighbourhood Support coordinator. He says, "Geraldine's a really pro-active community. There's a very strong Neighbourhood Support network here." He says the community patrol sprang into being when the need for mobile monitoring arose. "The trigger was a mini-crime wave a while ago with the police station mostly closed," says Melanie.

Temuka sergeant Mike van der Heyden says, "I've worked with community patrols for 25 years. They're valuable; we can link their reports to offences. It's about crime prevention and providing reassurance."

Melanie gives examples including an elderly woman whose lock was tampered with: the patrol gave her security tips, alerted her neighbours and fixed the lock. Also of the neighbourhood "where there had been a spate of unreported property theft: talking with the neighbours, we put two and two together and took the opportunity to report it." And the missing children: "Their mum flagged us down and we joined the hunt. We found them and gave them a talking-to."

The other side of community patrols' work – operating police stations – is on hold nationally, Mike says, "until stations are fitted out with security counters". When that's done, Geraldine senior constable Murray



Geraldine community patrol chair Melanie Page, Temuka constable Tim Easton (relieving), Temuka Sergeant Mike van der Heyden, South Canterbury Neighbourhood Support co-ordinator Rob Coleman, community patrol vice-chair and volunteer co-ordinator Thea Andrew, and Geraldine senior constable Murray Thatcher. Mike says, "Community patrols add value - very much so." Photo: Jan Finlayson.

Thatcher says, "We'll be ready to go. There's a desk set up and the paperwork's done."

It's worth doing, relieving constable Tim Easton says. His experience with community patrollers running stations is that "They're local people with local knowledge. Having them means you don't have to be in the station all the time; you don't have to return all the time for minor matters."

"With police resources getting tighter, it's something we can do to bridge the gap. And because we love our community and enjoy being involved," says Melanie.

To contact community patrollers, call 027 375 1080. For information on becoming a patroller, call the above number, go to Geraldine community patrol's Facebook page or email geraldinecommunitypatrol@gmail.com.

Jan Finlayson

To contact community patrollers,
call 027 375 1080.
For information on becoming a patroller,
call the above number,
go to Geraldine community patrol's Facebook page
or email geraldinecommunitypatrol@gmail.com.

"Try us, you'll be pleased you did"

L J Hooker Geraldine
16 Talbot St, Geraldine
Ph 03 693 9775, Fax 03 693 9774
geraldine@ljh.co.nz
geraldine.ljhooker.co.nz

AJ Ramsay Real Estate LTD, Licensed Real Estate Agent (REAA 2008)

Jennian Homes Mid & South Canterbury

Timaru Office & Show Home
287 Hilton Highway, Timaru

T 03 688 0146 E salesmsc@jennian.co.nz

OPEN Monday to Friday 8:00am - 5:00pm or by appointment
OPEN Saturday and Sunday 10:00am - 2:00pm or by appointment

Jennian
HOMES

Your personality Our expertise

0800 JENNIAN jennian.co.nz

Peel Forest Café & Bar

Music Night

Jenny Mitchell

One of our best young Country
Singers

Saturday 12th November

From 7.30pm

Great music at a great country bar
Serving good home cooked food
Open wed, thur, fri, sat nights for dinner
03 6963567

Find us on  Peel Forest Bar and Cafe

McAtamney Gallery ready for Festival

"The gallery is filling up with new work. It'll have a whole new look by Arts and Plants weekend, with an array of new work by experienced artists, and a lot more, including some new secondaries," says McAtamney Gallery and Design Store co-owner Carolyn McAtamney-Rasch. Four artists' new work will feature. *The Geraldine News* caught up with Carolyn and exhibitors to find out more.

Gabriel Heimler and Anna Proc. Dynamic murals with philosophical themes have brought this pair to prominence. They're best-known in New Zealand for their *The Mover*, on Wellington's Museum Hotel, and in Germany, Heimler's 1989 Berlin Wall work, *The Wall Jumper*, has three million visitors a year. "We like huge format – murals – and, in paintings, as big format as possible," Anna says. She adds, "The works in *Woman in Nature* are about women in nature: all kinds of nature, from hard to embracing. It shows how women integrate with nature."

Susanna Izard. This Lake Tekapo artist is "an energy painter", says Carolyn. "We have several graphite and watercolour Mackenzie landscapes on paper and still lifes in acrylic." The still lifes challenge the genre's conventional inertia: "There's so much, well, life to them. Susanna gives new life to still life." Susanna says, "I want them to not be so static."

Rachael Dewhirst. Rachael says, "My process is spontaneous; I respond to what happens on the canvas. The acrylic I work in helps me do that in a fast-paced way. I like working large and moving a lot. It's a physical process."

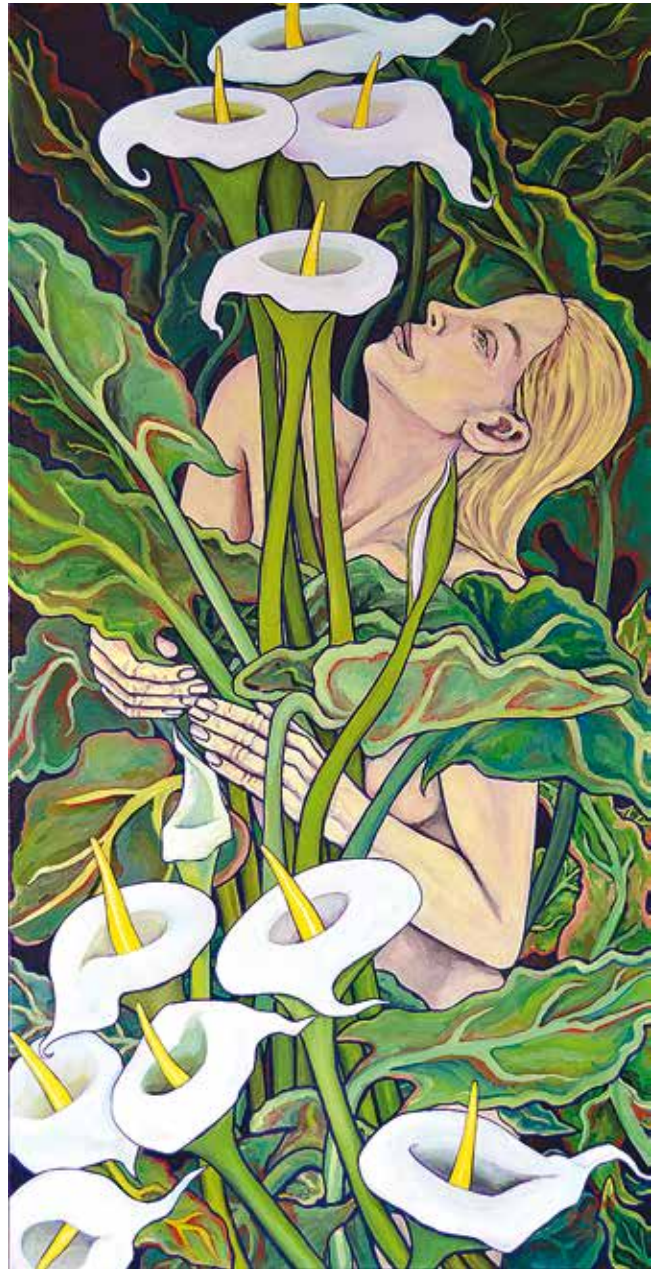
Art commentator Warren Feeney writes that Rachael's work "embodies a certainty in its comprehension of painting as a specific way of making art that has its own means of representation." Carolyn says, "These are the first abstract works we've had for some time. They're exciting and vibrant; the story is the painting and each piece is its own story."

Sue Connolly. This South Canterbury artist is showing two series of monoprints. *Marks on Paper* and *Landscapes* are "clean, poised works that have an intrigue", says Carolyn. "They draw the eye to things that maybe you don't see ordinarily."

Other works. Alongside the featured artists' exhibitions is a diverse range of new and secondary works, including some "that've just arrived, secondaries by Austen Deans, Michael Tuffery, and Paul Hanrahan", Carolyn says.

Information "Opening is extended at Arts and Plants weekend, from Thursday until Sunday, from early till late in the day." For further information about McAtamney Gallery and Design Store, call 693 7292 or 027 305 3000, or visit its Facebook page or website at www.mcatamneygallery.co.nz.

Jan Finlayson



A work from Gabriel Heimler and Anna Proc's *Woman in Nature* exhibition depicting women's relationships with the natural world. Photo: Supplied.

McATAMNEY GALLERY AND DESIGN STORE



RACHAEL DEWHIRST | NOCTURNAL

MODERN AND CONTEMPORARY NEW ZEALAND ART

www.mcatamneygallery.co.nz



**Peter Young
APPAREL**

**FOR ALL
YOUR MEN'S
LEVI'S**



28 Talbot Street, Geraldine. Ph 693 7118.

6 Geraldine properties
SOLD IN SEPTEMBER
by the Harcourts Team.
**WANT TO KNOW WHAT
YOUR HOME IS WORTH?**
Phone us for a **FREE** no
obligation appraisal.



243b Talbot Street



38 Peel Street



36 Church Street



126 Talbot Street



717 Orari Back Road



6 Hewlings Street

Harcourts

Harcourts Blackham & Co Real Estate Ltd REAA 2008

Phone 03 693 9005
enquiries.geraldine@harcourts.co.nz

CONTACT US

Ph 0800 693 800
fax 03 525 8699
geraldinenews@ihug.co.nz

Requests for submitted articles: phone *The Geraldine News* at least two weeks prior to event. Usual deadline for all items: Noon Mondays. Agents: Hammer Hardware. Advertising costs: Classifieds: 50c/word. Display ads: contact us for details. While every effort is made to ensure the accuracy of information in this publication, The Geraldine News does not accept any responsibility for errors or omissions or for any consequences arising from reliance on information published. The content of submitted material is not necessarily endorsed by the owners. The editor reserves the right to make final decisions on layout of submitted ads. Copies can be bought and we have a subscription service.



34 High St, Geraldine
Ph 693 1401

The team who cares about your car.

**National
Superannuation
card holders
now get
15% discount**





**Marks
electrical services**

Mark Worden

Appliances-REPAIRS & SERVICING

Mbl. 0220 689 569
Ph.03 693-8906
Geraldine

Wiring- DOMESTIC & COMMERCIAL
Heat Pumps - SUPPLY & SERVICING
Freeview Installation

*Free Quotations
Efficient Personal Service
Special Rates for Pensioners*

Arts and Plants Festival ready to rock

“It’s in its 28th consecutive year,” Geraldine Arts and Plants Festival chair John Rule says of this celebration of the verdant season and visual and performing arts in Geraldine. “It’s big. It has built up over time and it’s well-known: free, family-fun entertainment, focused on the town...” The festival has its constants – gardens and the arts – but every year sees innovation and a new mix. *The Geraldine News* talked with John and the organisation’s secretary Jill Taylor to find out about this year’s Arts and Plants to be held on 10-13 November.

Opening. Everyone is welcome at the Thursday evening event at Geraldine Primary School hall. John says, “The official opening is at 7.30pm. Damon Odey is officiating and Jason Shaw is MC. The arts exhibition opens then, too, and you’re surrounded by the paintings and photos. As well, the high school wearable arts will be on display, as well as floral arts, fabric postcards and children’s rock art.” The exhibition runs until 3pm on Sunday.

Gardens. “There are 10 gardens to visit around the district, in town and out of town,” John says. Included in the lineup, Jill says, “are some young gardens, which gives a chance for people to look at garden structure to help with planning their own and to see what can happen in a young garden in a short space of time”. Most garden walks are free of charge.

Entertainment. Jill says, “The Warratahs are kicking off their 30-year anniversary with the Arts and Plants gig. And we have the RSA Taieri pipe band, which is definitely not your everyday pipe band.” John says, “ We have Grace Shaw on violin, BronzBeat hip hip, Zoe Scott and Lyttelton Transit Lounge, Breakthru, Drama Queens, Th’ Art of Cheese, Garage Nites and the South Canterbury Drama League junior choir.”

Events are spread through the weekend at different venues. A 2016 refinement, John says, is that “it’ll be clear in front of the village green, to open it up to entertainment.”

Boulevard day and market day. Friday’s boulevard market takes place on Talbot and Wilson Streets; the focus shifts to Geraldine Domain on Saturday. “Combined, these days have more than 350 stalls,” says John. “There are stallholders coming from a long way, even Auckland, selling a host of things. We’ve encouraged artisan stalls, not mass-produced stuff. There are plenty of local stallholders, and we’ve increased the number of plants stalls.” Jill says regular visitors to Arts and Plants will notice “many new and different stalls.” Alongside, there will be the produce, plants and music of the regular Saturday Farmers’ Market at St Mary’s church.

Displays and exhibitions. One highlight will be demonstrations by the Geraldine Road Crash Rescue Team, which won the Australasian Road Rescue Challenge in July and is now focusing on competing in the 2017 World Rescue Challenge, Jill says. “There’s everything from a classic car display, to patchwork, a bookarama, stamping, hanging baskets...” John says.

Especially for children. “There’s a Kubota digger challenge, with all the proceeds going to the toy library, bouncy castles, the Rainbow Fairy, the fire brigade, and a balloon show,” says John.

Information. Geraldine Arts and Plants 2016 begins at 7.30pm Thursday, 10 November and closes 3pm Sunday, 13 November. For detailed information, go to the festival’s website at geraldinefestival.co.nz, visit the Facebook page or call 027 444 8226.

Jan Finlayson

VILLAGE LANDSCAPES & HIRE

- Stihl quality garden gear for hire. Weed eaters, scrub cutters, hedge trimmers.
- Generators, pumps, concrete saw, demolition hammer, paving and tile cutting bench.
- Waterblasters. Discover why Geraldine’s best painters keep coming back. 3000psi trailer unit and 2000psi portable model available for hire.
- Lawn mowers, lawn-seed spreaders and lawn sprayers.
- Plate compactor, concrete vibrator and concrete screeds.
- Concrete shingle. Loan trailer and delivery available.
- Limited access to your property? Our Kanga mini-loader with bucket and accessories is only 1.1m wide. Great for jobs big and small.
- Topsoil, screened. Loan trailer and delivery available.
- Oak Wine 1/2 Barrels – Back in stock, but selling fast.

31 Wilson Street, Geraldine. Ph 693 7321.



The Warratahs are kicking off their 30-year anniversary tour with the Arts and Plants gig. Photo: Supplied.



The Kubota digger challenge is a popular attraction. Photo: Supplied.

Badcock’s mother-in-law’s daffs

Painting daffodils “is a tradition for me,” says Geraldine artist John Badcock. “It’s about the vibrancy of that colour. It gets me out, gets me started on the whole garden season.”

His annual custom records each spring’s uniqueness. “These are called mother-in-law’s daffs and they have charcoal black and grey contrasting with the yellow. My mother-in-law gave me a lot of bulbs, which I planted,” says John. “Those colours are the essence of the 2016 season. That grey is what was outside the studio this year; the mood of the spring we had.”

The works, in oil on board, are on display at Susan Badcock Studio at the back of the old post office on Talbot Street.

Other works in the studio include pieces by Susan and Douglas Badcock, monotypes by Sharon Whittaker, and accessories by New Zealand company Deadly Ponies.

The studio’s Arts and Plants weekend opening hours are as normal - 10am to 2pm - or by appointment on 021 175 2853.



Submitted

Verde
CAFE DELI

Indoor & outdoor dining

open 7 days
Ph 693 9616
BEHIND OLD POST OFFICE

Geraldine's very own Essentials Fresh Dog Roll

- 100% NZ lamb
- No fillers
- New improved recipe
- Added amino acids for extra protein



Try a free sample now at The Geraldine Orchard or call 0800 426 539.

Essentials
NATURALLY ADVANCED

www.animalessentials.co.nz

SIMPSONS FLOORING XTRA
FREE MEASURE & QUOTE WITH AWARD WINNING SERVICE IN YOUR AREA

"BEST SERVICE... BEST PRICE"

0800 4 FLORX
flooringextra.co.nz

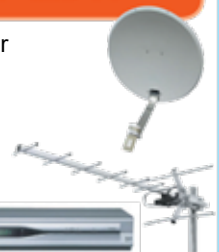
102 HILTON HIGHWAY, WASHDYKE, TIMARU P: 03 688 2829 donsimo@ihug.co.nz

RECEPTION SPECIALIST SERVING GERALDINE

RECEIVE THE HIGHEST QUALITY PICTURES FOR YOUR LCD - PLASMA - LED TV

Your local Freeview Digital TV installer

- Pre-wire of new homes
- TV and DVD tuning, FM aerials
- Extra TV and phone points
- TV wall mounting
- Home theatre installation



ASHBURTON TV & AUDIO LTD
CONTACT: 03 308 7332 • 027 277 1062

Dale Lilley Plastering

For all your interior plastering needs

Ph 027 313 8338 Hm 693 9013

IN GOOD TASTE: Spring Fever

Asparagus, snow peas, broad beans, artichokes, spring onions, fresh herbs: together they are a symphony of taste and texture and perfect when all cooked together, either lightly steamed or sautéed with just a little chilli, garlic and ginger. This is even better when served with omega-rich salmon escalopes. The word escalope simply means a thin slice of meat or fish, and comes from the old French for "shell", referring to its appearance, so don't feel intimidated.

It never fails to amaze me how short the asparagus season is, and each year I'm even more determined to make the most of this young shoot from the lily family.

Salmon escalopes with spring greens

- 800g piece of skinless boned salmon
- 50g butter
- 2 tablespoons of olive oil
- 200g asparagus (woody ends snapped off), sliced on the diagonal
- 200g snow peas, strung
- 100g broad beans, podded
- 150g peas (frozen is okay)
- 3 spring onions, finely sliced
- 1 clove of garlic, crushed
- 1 sq cm of ginger, grated
- ½ red chilli, finely diced
- Juice of 1 lemon
- Crusty bread to serve

Slice the salmon into eight thin slices on the diagonal. Heat half the butter in a pan and cook four of the salmon slices. Turn once and cook the other side till golden, no more than a minute each side. Set aside and keep warm while you heat the remaining butter and cook the other four slices of salmon. Add these to the first lot, spreading them out on a warm serving plate, and wipe out the pan. Now heat the pan again with the olive oil, and when hot but not smoking, add the green vegetables. Cook for two minutes and add the garlic, ginger and chilli, and season well. Continue sautéing until



Salmon escalopes with spring greens and braised spring vegetables. Photo: Fiona Feasey.

the vegetables are crisp but tender. Squeeze on the lemon juice, flick around once more and spoon over the salmon.

For a very Italian take on cooking spring greens, try this next recipe. It could be served as a thick soup, a side dish, or a meal on its own. It's good hot, but even tastier when served warm.

Braised spring vegetables, Italian style

- 2 tablespoons of olive oil
- 4 spring onions, finely sliced
- 3 cloves of garlic, crushed
- 200g asparagus, sliced on the diagonal
- 150g green beans, cut into 2 cm slices
- 150g green peas (can use frozen)
- 150g fresh broad beans, podded
- 2 zucchini, diced
- 200ml chicken stock
- Grated parmesan to serve
- Extra virgin olive oil to serve

Heat the two tablespoons of olive oil in a pan and add the next seven ingredients. Sauté around in the garlicky oil for three minutes. Add the stock, increase the heat and cook for another five. Serve in a bowl with the parmesan and extra olive oil on the side. Crusty ciabatta would be a perfect addition.

Fiona Feasey

WIN
— THE —
ULTIMATE
— SET UP —



\$5,000 PRIZE

Simply get a free appraisal on your property, and you're in the draw to set yourself up for summer with \$5,000 to spend at Mitre 10.

Find out exactly where you stand in the current market, and be in to win! **Call now 03 693 1315**

Hastings McLeod Limited MREINZ Licensed REAA 2008 Terms and conditions apply – visit propertybrokers.co.nz/summer



propertybrokers.co.nz

QUALIFIED ARBORIST

Experienced arborist available for all your tree pruning and removal needs.

Phone Li Tane on 022 308 1858 or email: info@arborculture.co.nz for a free quote.

HAIR 'N' MIND

172 Talbot Street. Ph 693 7951.

Next to the Vintage Car & Machinery Club

Is your hair feeling dull?

Come and refresh and add shine to your colour.
Tue, Wed & Fri 9 - 5, Thu 9 - 8, Sat 9 - finished.

Geraldine Preschool catering for working families

The Geraldine News visited Geraldine Preschool recently to find out about its kōhanga/nest just for the under-twos, their teachers and their parents.

Head teacher Sue Cooper says, “Everything’s at an unhurried pace here – it’s very calm. The children have a lovely day in here.”

It is indeed serene and very spacious. There are several indoor environments including a sleep room with six cots and four little beds. Outside, children’s play equipment can be placed on grass, bark or harder surfaces, under shade or sun and the area is surrounded by ornamental and edible gardens.

Jo Bell is one of four full-time teachers in the centre’s under-twos room. She says, “You feel honoured to be part of the child and family’s life. We involve their backgrounds as much as possible. We’re mindful of the brain blueprints and the development that happens in the blink of an eye.”

Like her colleagues, Jo works particularly closely with a small handful of little ones. Sue says, “Each child has a key teacher. It’s about emotional attachment; 80 per cent of the brain’s development takes place in the first three years.”

An enviroschool, Geraldine Preschool aims to foster mindsets tuned to sustainability: children’s self-awareness as community members and as part of the environment is integral. To cultivate that, teacher Sarah Bailey says, “We do a lot of outings, once a week at least, from looking at animals to going to Mainly Music to posting letters ... making connections with the wider world.” And, with a tamariki-kaiako ratio of 3:1, Sue says, “They can spontaneously go on outings.”

“We’re catering for our working families,” Sue says. Sarah says, “We’re giving the children real quality of care. I love providing opportunities.”

To find out more about Geraldine Preschool, go to www.geraldinepreschool.co.nz.

Jan Finlayson



Geraldine Preschool under-twos Annabel, Mac, and William, and teacher Jo Bell, play with cornflour dough. The primary colours they began with became a rainbow of secondaries, then this single caramel tone. Photo: Jan Finlayson.

COLORADO DRIVE DAY



“RUGGED OUTSIDE
REFINED INSIDE”

Smallbone Holden would like to **invite you** to come and drive the new Colorado!

- Wed 23rd Nov
- 10am - 3pm
- 177 Evans Street Timaru

Come and join us for lunch & a coffee

**NEW 2017
HOLDEN
COLORADO
UNBEATEN.**

We look forward to seeing you there!

Can't make our Colorado Drive Day?
Give us a call and set a up a time to have a drive of the Ute everyone is raving about!



Smallbone Holden Timaru - 177 Evans Street, Timaru | 03 687 7530 | www.smallboneholdentimaru.co.nz

The Geraldine Home & Kindergarten Committee present:

The 2016 Scarecrow Trail

This Year's Theme is... **HEROES & VILLAINS**

Grab your map & entry form for \$5 from, Geraldine Kindergarten, Parkside Dairy or Geraldine Resource Centre.

Entries in by 5pm on Friday 25th Nov

Prizes to be won!

Winners announced Monday 28th Nov

Scarecrows on display for voting from 10th Nov - 25th Nov

CRACKED WINDSCREEN?

\$45 Stone Chip Repair

Conditions Apply

- Same Day Service!
- Your Place or Ours
- Fully Guaranteed

Glass Specialists

23 Theodosia St, Timaru. Call 0800 441-331

NEED TO MOVE SOME DIRT?

BIG OR SMALL, WE MOVE IT ALL!

Our services include

- Trenches • Siteworks • Building foundations • Vegetation clearing/control • Landscaping
- Cleaning out dairy sheds
- Certifying drainlayer

CALL US TODAY

Denys - 027 686 2237

Jared - 027 277 9519 or 03 692 2963 (ah)

ALL-IN-ONE EXCAVATION

QUALITY PEA STRAW \$50 BALE FOR SALE

LINSEED STRAW \$40 BALE

Call Hayden now to place your order & enquire about delivery on 03 6938553 or 021 36 55 11

haydenmackenzie contracting

FINANCIAL FOCUS: Is the future of investing sustainable?

Warren Buffett is famous proponent of ‘value investing’. This approach is simply defined as buying shares in companies where the total cost of the shares is lower than the value of the firm.

Value can be measured in a number of ways, often comparing the price you pay to either the book value of the company, or to its expected future earnings stream.

While these traditional valuation metrics have served us reasonably well in the past, will they be as suited to the new complexities of the 21st-century global economy?

A growing field of research is finding that in the long run, corporate financial performance is tied to a wide array of factors. These include environmental, social, and governance (ESG) factors which can fly under the radar of the more traditional valuation tools we’ve grown accustomed to.

For example, in recent years, financial journals have published studies suggesting that:

Companies with higher levels of employee satisfaction outperformed the market by 2 to 3 percent per year (Edmans, 2011)

Companies with clear environmental and social goals had share prices that outperformed those without similar goals by 47 percent between 1993 and 2010 (Eccles, Ionnuu & Serafeim, 2012)

Companies with better resource efficiency exhibited improved financial performance in sectors including food product manufacturing, specialty chemicals, pharmaceuticals, automotive, and semiconductor industries (McKinsey & Co, 2014)

Despite this, it is estimated that just one in five companies has a long-term sustainability plan, even though investors are increasingly demanding it.

Sustainable investing strategies have increased 76 percent since 2012, with nearly \$7 trillion in assets under management in the USA alone. But there is still plenty of room to grow. A recent corporate survey found that less than half of all investors considered that human capital, natural resources, and community and social capital were relevant to their investing decisions.

According to financial experts at Morgan Stanley, the challenge may be that “sustainability” as an idea is still commonly linked with the usual poster boys for unsustainable business practices, such as oil and gas, mining, and other extraction business. While those industries have obvious

downsides to not addressing sustainability, the new body of ESG criteria research has assessed that those risks - and their associated opportunities - are no longer limited to just a few industries.

A 2015 equity research report by Morgan Stanley titled “Embedding Sustainability Into Valuation” analysed 29 industry sectors from aerospace to utilities through the lens of sustainability. Its authors concluded that there are certain ESG factors, such as corporate governance and employee satisfaction that apply to business universally, although not necessarily in a uniform way.

For example, in a world where more people have access to cell phones than to clean water, the semiconductors that fuel these devices require water-intensive manufacturing processes, using as much water as a small city. Semiconductor manufacturers have subsequently found that by implementing renewable water systems into their factories, they have cut costs in ways that are good for both business and the environment.

Meanwhile, as the USA deals with an obesity and diabetes crisis, beverage markets find consumers shying away from sugary drinks. This is forcing companies to adapt the products they already sell, while also opening up opportunities for new markets that help address the rising demand for healthy and organic products.

For investors, momentum is clearly building. As at 2014, according to the Forum for Sustainable and Responsible Investment, one in every six dollars invested in the USA was invested sustainably, a figure which has been steadily rising in recent years.

It seems that the new metrics of sustainability might be filling some of the gaps that the tried-and-true traditional valuation metrics are failing to capture. As more data emerges to help investors better understand companies’ sustainability efforts in the future, investors can potentially gain greater insight into how to value these investments and, just maybe, achieve better returns in the long run.

To contact Damon, phone 029 977 8861, or email damon@consiliumnz.co.nz

DISCLAIMER: Damon O’Brien is an Authorised Financial Adviser. His column provides general information and opinions and it should not be considered personalised financial advice. Damon is not liable for any loss suffered by those who follow the information provided in his column. A disclosure statement is available on request and free of charge.

Christmas Photos with Jingles

JOIN JINGLES THE CHRISTMAS FAIRY FOR A GORGEOUS FAMILY PHOTO!

BOOKINGS ESSENTIAL – TEXT 021 1050750

GERALDINE COMMUNITY RESOURCE CENTRE

FRIDAY 18TH/SATURDAY 19TH NOVEMBER

9.30 AM – 4.30 PM

Christmas photos with Jingles package: \$29.95

- 4 x 15 cmx10 cm prints
- 1 x 15 cm x 20 cm print
- Digital file of photo
- Christmas fairy favour for each child

M & G AUTO CENTRE

Malcolm Main

A 13 PEEL ST GERALDINE

P 03 693-9664

F 03 693-9692

M 027 208 7590

FOR ALL YOUR MECHANICAL REPAIRS, TYRE REQUIREMENTS & WHEEL ALIGNMENT

TOYOTA PARTS & SERVICE CENTRE

Castrol OILS

Firestone TYRE OUTLET

A walk on the woolly side with a new Geraldine business

Geraldine has a brand new business – Alpaca Walks– and owners, Mike and Nicola Wilton, are looking forward to growing their new venture, which started on 1 November.

It is set on the banks of the Waihi River, off Beeby Road. Tourists and locals have the opportunity to take a walk on the woolly side and meet alpacas Pinto, Fernando, Ferrari and All Natural for cuddles or walks, all on private land. Mike says this is an important factor as “alpacas are very dog-shy so this way there are no worries with other people”.

What began as a brainstorm around various tourist ventures became reality for Mike and Nicola when they bought their small flock three months ago and employed Matt Searles of Green Man Creative, to take care of their marketing communications. These days the alpacas are living in clean, newly-formed yards and take daily walks as part of their training. Mike says his flock “were trained as little crias [babies]. They can lead freely.”

Mike and Nicola are enthusiastic about their alpacas and are optimistic others will fall in love with them. Mike says “We love them. They give you good karma and you feel good around them. They respond really well and they love interacting with humans.” Indeed, a walk with Fernando sees

the little alpaca get a spring in his stride and at one point he snuggles in like a cuddly teddy bear.

While there are other alpaca tourist ventures in the Canterbury region, Mike says Alpaca Walks’ point of difference is the interaction customers will experience. “Others do farm tours, not walks. We do the walks and interact with these beautiful animals.” With views to Mt Peel and the Four Peaks on one side and the Waihi River on the other, Mike is hopeful the opportunity to “get out into the rural scene of Geraldine” will also be a drawcard and the business hopes to capitalise on traffic passing through.

However, Mike and Nicola also have long-term plans for the locals, including hosting birthday parties. In addition to the alpacas, they have rabbits, guinea pigs and a pet lamb. “I don’t want to create a zoo scene but we have all these animals for children to play with.” He’s not limiting the business to on-farm activities either and wants to “involve the schools and the rest homes, even if it means taking the alpacas to them. Expect to see the alpacas at town festivals in the future and we’re definitely going to be in the Christmas Parade.”

For further information on Alpaca Walks, check out their website at alpacawalks.co.nz.

Pip Goldsbury



Alpacas Pinto, Fernando, Ferrari and All Natural enjoy a jaunt along the banks of the Waihi River with, from left, Nicola Wilton, Matt Searles and Mike Wilton. Photo: Pip Goldsbury.

LJ Hooker GERALDINE

*“Even the sceptics agree...
...nobody does it better.”*

LJ Hooker you're the best.

Jude Clarke
027 229 3541

Sandie Finnie
022 061 0492

Audre Ramsay
027 622 9845

Noel Walker
027 228 3600

LJ Hooker Geraldine
Ph: (03) 693 9775

AJ RAMSAY REAL ESTATE LTD
Licensed Real Estate Agent (REAA 2008)

Thinking of...

**A NEW HOME
RENOVATING
RESTORING
FARM BUILDINGS**

Build on it
BY CONTACTING

**G.J. ALLAN
BUILDER**

QUALITY WORKMANSHIP OVER 30 YEARS LOCAL EXPERIENCE

Ph 027 580 5665
A/h 03 693 9099
RD 21, Geraldine

Attention Farmers!!!!

11.5 t DIGGER FOR DRY HIRE

“Do the easy stuff yourself or use our experienced operator for the hard stuff.”

Ph Mark Bolderston 021 554 574 or 693 7973

DESIGNS & FRAMING
LIKE IT - FRAME IT - LOVE IT

Annette P Coulter

All framing is produced using conservation-grade products and techniques, including the specialty process of stretching & lacing of tapestry, cross-stitch and any other needlecraft, 3D shadow boxing a specialty, with a huge range of the latest frames and matboards to choose from.

Prompt efficient service a guarantee!

199 Stafford Street, Timaru.

Ph 03 688 0438 or 021 135 0151

HOURS: Monday-Friday, 9.30am-5.00pm

AORAKI KERB & CHANNEL LTD

Using only high quality certified concrete, Aoraki Kerb & Channel specialise in:

- Driveways • Car parks • Garden edges
- Machine-laid continuous kerbing

With experience across small and large commercial and residential projects, we can cater to any of your concreting needs.

P. 0800 688 000
E: mark@aorakikerb.co.nz
W: www.aorakikerb.co.nz

Men's Health awareness week

MOVEMBER

Prostate Problems can include:

- Needing to urinate often, during the night
- A weak urine flow
- Urine stopping then starting during flow
- Delay in start of urine flow
- Taking longer to urinate than usual
- Feeling that the bladder is not empty after you finish

GERALDINE PHARMACY

Professional advice & Friendly Service
Open Mon-Fri: 9am- 5:30pm
Sat: 9:30am- 12:30pm

GERALDINE TIMBER PRODUCTS AND

Quality JOINERY

DESIGN & INSTALLATION

PH (03) 693-9598 *Paul Antridge*

GERALDINE GLASS & Glazing

Double Glazing & Retrofits

Insurance Claims

Safety Glass

Pet Doors & Fire Glass

Showers, Mirrors & Splashbacks

3A Talbot Street
Phone 0800 693 9927
www.geraldineglass.co.nz

PATTERSON
 PLUMBING  DRAINLAYING

Mark Patterson
 PENSIONER RATES / QUOTES
 DRAINAGE / NEW HOMES
 ALTERATIONS / SPOUTINGS
 LOG FIRE INSTALLATION

PHONE 03 693 9625
 MOBILE 0274 353 657
 23 GEORGE ST. GERALDINE



Garth Payne
ELECTRICAL
 MOBILE 027 2009619
 38 Sherratt Rd, RD 21,
 Geraldine
 AH. 03 693-9124
 FAX 03 693 7420



Gifts for everyone


28 Talbot Street, Geraldine. Ph 693 7118.

Christmas at Verde Cafe Deli
 Evening Dining \$50 per head
 Friday 9 December
 Saturday 10 December
 Friday 16 December
 Saturday 17 December
 Bookings are essential
 Verde Cafédeli 693 9616



The Geraldine News
"A great little paper!"

Playgroup members enjoy Riding for Disabled visit



Siobhan Moulton and her son Barnaby Moulton with Cincinnati and Riding for Disabled president Jenny Hall. Photo: Submitted.

Pleasant Valley Playgroup and Geraldine Riding for Disabled group spent a sunny day in each other's company last week. The two groups organised a get-together to give both youngsters and horses a chance to socialise together and learn about one another. "A great morning was had by all," says Ellie Deans, who attended with her young son. "The children really enjoyed meeting the horses, feeding them some carrots and having a ride."

Riding for Disabled president Jenny Hall and helper Jenny Perabo accompanied horses Cincinnati and Kattan. "It's lovely when two groups from our wonderful community can come together and offer such joy and fun to the preschoolers," says Ellie. "It was an awesome learning experience for all of us." Riding for Disabled are a volunteer organisation. They have 11 riders per week currently and they welcome any extra help for Tuesdays.

The playgroup meets weekly to give mothers and children a chance to be involved in group activities and allows toddlers to socialise together and parents to spend time with other parents. The group currently has over 30 children enrolled and the door is always open for any newcomers. A new management team was recently elected within the group: Ellie Deans has taken on the position of president and Rachel Brownie has the role of secretary. "It's pretty happy times for us. I'm excited about my new role and thankful for the company of our wonderful mothers and children each week, Ellie says.

The playgroup runs on a Monday from 9am to 12pm on School Road in Pleasant Valley. Fees are \$5 per term or a gold coin donation for casual visits. "Anybody is welcome. It's a great way to meet new friends."

Jordyn Te Rahui-Hobbs

Leading the charge in
**ELECTRICAL BREAKDOWN
 SERVICING & SOLUTIONS**



CALL TODAY
03 693 9399

Switched on specialists in emergency servicing and repair. Laser are experienced in all fields of electrical breakdowns - *we'll be there when you need us!*



GERALDINE BRANCH OPEN: MON-FRI 8AM - 5PM
 TEMUKA OFFICE OPEN: WEDNESDAYS 8AM - 5PM
 Laser Electrical 17 Peel St, Geraldine 03 693 9399
 Laser Electrical 44 Vine St, Temuka 03 615 6622

www.laserelectrical.co.nz 0800 LASER 4 U (0800 527 374)



Raising happy, confident and resilient children

The average child's day is bursting with potential disappointments - small and large. But when you start examining your response to these, you might be surprised how many never even reach your child's radar due to your determined efforts to protect them from ever suffering. But any muscle that's to grow stronger needs to have a little weight on it. It might sound obvious, but the only way for kids to learn to "bounce back" is for them to occasionally be "dropped" (metaphorically of course). The safest place for this to happen is at home, when they are small, surrounded by family who love and care for them enough to let them suffer, just a little, through life's setbacks, and survive.



**GERALDINE
 TIMBER
 PRODUCTS
 AND
 Quality JOINERY**
 DESIGN & INSTALLATION
 PH (03) 693-9598



GHS senior prizegiving

Being the top student in all her subjects (Biology, Calculus, Chemistry, Physics and Statistics) has gained Anna-Kay Cressy the Geraldine High School 2016 Dux award. The award comes with up to \$6000 which Anna-Kay will put towards her studies for an engineering degree at Canterbury University. She also received the Geraldine Licensing Trust's award for Academic Potential and Contribution to the Sciences and Mathematics which comes with a \$1000 grant.

Anna-Kay says she doesn't have to try particularly hard to get these results.

"I find it interesting so it comes easy to me. I'm stoked at getting the Dux prize"

Outside of school Anna-Kay likes to play piano and do karate and this year has undertaken a university mathematics course worth 30 points towards her degree if she passes.

While she is completing her engineering degree, Anna-Kay hopes to major in Mechatronics which unites the principles of mechanics, electronics, and computing to generate a simpler, more economical and reliable system.

This year was the first time the Jo Nicolson Scholarship has been awarded to remember the work of the much loved deputy principal who passed away suddenly last year. Olivia Hall was the recipient and says she was quite emotional when her name was read out.

"It is such an honour. I had Miss Nic for Classics last year,



Prizegiving stars, from left, Anna-Kay Cressy with the Geraldine High School Dux Trophy and Medal, Olivia Hall with the Proxime Accessit (donated by the Sinclair family) and Zoe Greenslade with the Board of Governors' Trophy Awarded for All-Round Excellence.

she was my favourite teacher."

The scholarship is funded by the Geraldine Lions club to the tune of \$1000 which will come in handy next year when Olivia starts her Sociology Degree at Otago University.

Olivia also topped Drama, Geogography, English and Health and received the Sinclair Family trophy; Proxime Accessit award as the runner-up to the Dux. Like Ann-Kay, Olivia doesn't find her subjects all that difficult.

"It fascinates me and if it interests you, it comes easy."

Lindsay Nelson

GERALDINE HIGH SCHOOL SENIOR PRIZE GIVING LIST

SPECIAL AWARDS AND SCHOLARSHIPS: THE CHRIS QUIGLEY MEMORIAL PRIZE: For Most Improvement in Technical Areas: Sandip Singh. PRIMARY INDUSTRY TRAINING ORGANISATION: PGG Practical Prize: Scott Moffitt. SERVICE TO STUDENT COUNCIL TROPHY: Annabel Smith. WESTPAC PRIZE for Service to School and Community: Annabel Mulligan. BL MITCHELL CUP: For diligence, perseverance and courage: Parthkumar Desai. PRINCIPAL'S PRIZES FOR HEAD STUDENTS: Shania Dudson-Cooney, Henry Gualter. RANGITATA RAFTS SCHOLARSHIPS: George Gallichan, Annie Robertson. CHARLIE TRIPP AWARD: Jackson Foster. COTTER FAMILY TECHNOLOGY BURSARY: For poytechnic study: Scott Moffitt. HARCOURTS SCHOLARSHIP: Krystella Baker. JO NICOLSON SCHOLARSHIP: Olivia Hall. VERA ALLAN TRUST AWARD: Jack Guerin, Sergio Johnson, Abigail Plows, Jackson Prattley-Jones, Shania Dudson-Cooney (Shania has also been awarded the University of Otago Maori and the Pacific People's entrance Scholaship and the Vice-Chancellor's Scholarship). GERALDINE MASONIC LODGE CENTENNIAL AWARDS: Henry Gualter (Henry has also been awarded both a University of Otago and Canterbury University Emerging Leader's Scholarship), Zoe Greenslade (Zoe has also been awarded a University of Otago Leader's of tomorrow Scholarship). GERALDINE LICENSING TRUST GRANTS: For good work ethic in class and contribution to the wider life of the school: Annabel Mulligan. For academic potential and contribution to Humanities: Zoe Scott. For academic potential and contribution to Mathematics and the Sciences: Anna-Kay Cressy.

SUPREME AWARDS: AIDAN SCOTT MEMORIAL AWARD: Awarded for academic potential in Science subjects: Harry McFarlane. METCALF FAMILY TROPHY: Best All round Senior Sports Person: Sergio Johnson. MP WATSON SHIELDS: Awarded for All-round Academic and Sporting Ability: Louise Newark, Henry Gualter. YEAR 12 ACADEMIC EXCELLENCE AWARD (Donated by Deborah Hume): Emma Horn. PROXIME ACCESSIT (Donated by the Sinclair family): Olivia Hall. GERALDINE HIGH SCHOOL DUX TROPHY and MEDAL: Anna-Kay Cressy (Anna-Kay receives the Canterbury University Dux Scholarship). BOARD OF GOVERNORS' TROPHY: Awarded for all-round excellence: Zoe Greenslade.

SPORTS: 1st XV TROPHY: Rugby Award for Most Worthy Player - Devin Lawson. RUGBY 99 TROPHY: Contribution to School Rugby: Sergio Johnson. DUCKHAM-DRENNAN TROPHY: for contribution to Girls' Rugby: Layaura Beattie. KNIPE FAMILY TROPHY: Women's Grade Rugby: Louise Newark. WOOD SISTERS' TROPHY: Girls' Basketball Award for Best Effort: Tianna Curtis. GERALDINE HIGH SCHOOL TROPHY: Boys' Basketball Award for Most Worthy Player: George Gallichan. ADRIENNE MACKENZIE TROPHY: Netball Award for Most Worthy Player: Maisie Fisher. CARTWRIGHT TROPHY: for the

most improved Netball Player: Claudia Bolt. NETBALL 99 TROPHY: for Contribution to School Netball: Courtney Bates. THATCHER FAMILY TROPHY: for most worthy male Hockey Player: Henry Gualter. GHS FOUNDERS' CUP: for the outstanding 1st X1 Male Hockey Player: Jack Guerin. BEEBY FAMILY TROPHY: for most worthy female Hockey Player: Bridget Guerin. DUNCAN TURNBULL TROPHY: Soccer Award for Most Valuable Player: Joe Goring. GHS Award: Services to Sport and the Junior School: Shania Dudson-Cooney. PAYNE TROPHY: for Service to Sport: Jack Guerin, Courtney Bates. TE KUITI COLLEGE PATU: Contribution to Maori Culture: Shania Dudson-Cooney. CURRIE LITERARY CUP - for Senior Original Composition Matthew Hornsby. SU COTTAM MEMORIAL CUP: for Contribution to Music: Daaniel Quiambao. GERALDINE PLAYERS TROPHY: for contribution to the Performing Arts: Emma Horn. GERALDINE HIGH SCHOOL CUP: for Excellence in Languages: Quinn O'Halloran.

BLUES AWARDS: Freya Bates - Music. Kate Brown - Motorcross. James Burnett - Pool. Drew Chisnall - Basketball. Aria Cressy - Music. Tianna Curtis - Basketball. Emily Dodd - Music. Felix Finlayson-Hood - Music. Henry Gualter - Hockey. Jack Guerin - Hockey. Stephen Harding - Cross Country. William Holland - Music. Emma Horn - Music, Drama. Cheyenne Ironside - Athletics. Sergio Johnson - Rugby. Logan Keggenhoff - Drama. Devin Lawson - Rugby. Daaniel Quiambao - Music, Drama. Zoe Scott - Music. Andrew Tweed - Football. Henry Watts - Music.

SENIOR SUBJECT AWARDS: LEVEL 1: Top Academic Prizes: Margrethe Bendsen - English. Jessie Bird - Food Technology. Kirby Brown - English, Mathematics, Science. Mark Cardeno - Drama. Aria Cressy - Science, Mathematics. Felix Finlayson-Hood - English, History, Mathematics, Music, Science. Maisie Fisher - Art, Geography, Science, Physical Education. Monique Gilbert-Keen - Textiles. Bridget Guerin - Design and Visual Communication, Mathematics. Kasie Jopp - Health. Zettlin McAtamney-Rasch - Primary Industry Academy. Shakayla McColl - Agriculture, Digital Technology. Scott Moffitt - Materials Technology. Georgina Moginie - English.

LEVEL 2: Top Academic Prizes: Freya Bates - English. James Burnett - Accounting, History. Kate Brown - Physical Education. Amy Carpinter - Food Technology. Nina Cosgriff - Geography. Pema Gyeltshen - Design and Visual Communication. Emma Horn - Chemistry, English, Mathematics, Music, Physics, Biology. Matthew Hornsby - Chemistry, English, Mathematics. Grace Lange - Art, Textiles. Brandi Limbe - Mathematics Intermediate. Petra Martin - Agriculture. Hayden Nelson - Outdoor Education, Physical Education. Louisa Prattley - Health. Daaniel Quiambao - Mathematics, Biology. Ethan Savage - Digital Technology. Hamish Scannell - Primary Industry Academy, Materials Technology. Annabel Smith - English.

LEVEL 3: Top Academic Prizes: Karli Adams-Strachurski - Food

NEWS IN BRIEF

Mark Laurent and Brenda Liddiard at the academy

Indie folk-blues duo Mark Laurent and Brenda Liddiard are playing at Geraldine Academy of Performance and Arts on November 17 as part of their 2016 national tour. The prolific singer-songwriters have been playing music and recording together for two decades.

"We're delighted they've chosen to do a concert at our academy, which is increasingly being used for live music as well as our courses," says academy co-ordinator Jill Griffin-Roberts. "It'll be a relaxed setting with a bar and candlelight."

Entry is \$15 (no pre-sales: cash only), 7.30pm, Thursday 17 November at Geraldine Academy of Performance and Arts on Talbot Street.

Jan Finlayson

Forest and Bird Hui

About 100 Forest & Bird members from around the South Island got together in Geraldine last weekend to discuss the crucial and ongoing battle for New Zealand's native wildlife. The South Canterbury branch of Forest & Bird hosted this year's event, and took the opportunity to share their work helping protect native animals, such as a genetically distinct sub-population of bats only found in South Canterbury, native grass geckos and skinks, and dwindling native habitat, including the some of the last remaining lowland silver tussocks, and kowhai. Forest & Bird's new CEO Kevin Hague was also in town for the event, and was particularly interested in the successes of the local branches, and their plans for restoring some of the region's important native biodiversity in the near future.

Submitted

Dear Editor,

I want to thank you again for the wonderful content of the news each week. Geraldine is fortunate to have our own newspaper and competent reporters. Many of us would never know the good things that happen in our village, if we did not receive *The Geraldine News*. Many thanks.

I would like also to comment on the article (Nov 3) about Alastair Reilly and a thank you to reporter Lindsay Nelson. I was blown away by Alastair's personal profile and the honour extended to him in being one of the chosen pilots for the inaugural flight of the A380 Airbus from Christchurch to Dubai

Oh boy, what a big plane! He must be some pilot! Imagine, as a child, spending all day watching planes at the Christchurch airport. He certainly knew how to add fuel to his dreams. It is absolute proof that if you really, really want to, you can make your dreams come true, Congratulations Alastair. I am sure all Geraldine takes pride acknowledging you as one of our own.

Esther Paddon,

Ed. Thank you Esther.

The Geraldine News welcomes letters to the editor. Please email your letter to us. Include the writer's full name, home address and daytime phone number. Letters will be printed over the name of the writer; names are withheld only when compelling reasons can be established. **Letters should not exceed 250 words.** Letters that are too long might not be considered. All correspondence is at the discretion of the manager, who reserves the right to decline, edit, or abridge letters without explanation.

GERALDINE HIGH SCHOOL SENIOR PRIZE GIVING LIST (continued)

technology. Krystella Baker - Economics. Courtney Bates - Textiles. Tessa Boal - English. Anna-Kay Cressy - Biology, Calculus, Chemistry, Physics, Statistics. Kerry Eddie - Art. Henry Gualter - Statistics. Olivia Hall - Drama, English, Geography, Health. Sergio Johnson - Physical Education. William Johnstone - History, Statistics. Louise Newark - Accounting. Iza Pitoc - ESOL. Jackson Prattley-Jones - Design and Visual Communication. Logan Roberts - Outdoor Education. Zoe Scott - Music. Tim Sullivan - Digital technology.

PTA PRIZES FOR EXCELLENCE IN WORK HABITS AND INDEPENDENT STUDY: Courtney Bates, Freya Bates, Margrethe Bendsen, Amy Carpinter, Anna-Kay Cressy, Kerry Eddie, Felix Finlayson-Hood, Bridget Guerin, Pema Gyeltshen, Olivia Hall, Emma Horn, Matthew Hornsby, Cheyenne Ironside, Ella Jack, Kasie Jopp, Logan Keggenhoff, Grace Lange, Harry McFarlane, Shiloh Mould, Iza Pitoc, Jackson Prattley-Jones, Annabel Smith, Jessica Stone.

RESULTS

GOLF

Grande Vue Golf Club. Sunday 6 November. Bisque Par: J Patrick 107 41 66 +11, T Kerr 91 22 69 +7, M Denton 93 25 68 +5, A Muff 84 17 67 +5, M Lang 87 20 67 +3, C Patrick 79 9 70 +3, S McShane 107 28 79 +3, P Oliver 96 22 74 +1. Twos: C Patrick. Nearest the Pin: A Muff.

PUBLIC NOTICES / Pānui a whānui

YOU ARE INVITED! Living Waters Christian Fellowship, a non-denominational authentic christian fellowship, meets every Sunday at 10am at the Orari Domain Hall in Orari. A meaningful time of worship and a special children's time every Sunday. Grab a comfy family couch, enjoy a Living Word and experience what Christianity is really all about.

Come and see for yourself what God is doing.

We look forward to welcoming you. Enquiries:

693 8056 or 03 688 8702. www.headingforhim.com

LIVING WATERS. In-depth Bible Study, Wednesdays at 7pm, the Orari Hall, Orari. Ph 03 688 8702.

NOTICE is hereby given that the AGM of Seniorcare Geraldine Inc. (Waihi Lodge Care Centre) will be held in the Function Centre at 16 Shaw Street, on 18 November, 2016 commencing at 2pm. Afternoon tea to follow.

GERALDINE Environmental Trust, AGM, to be held at Geraldine Service Centre, 15 November at 2.30pm.



ROTARY COMMUNITY TELEPHONE DIRECTORY

ATTENTION Geraldine Temuka and Districts Residents The Temuka Geraldine Rotary Club Members are compiling a new Community Telephone Directory for 2017 to be delivered free to all residences in the area.

This month is the time to inform us of any new changes of address or phone number.

For any corrections or additions - phone NOW.

Please phone Derek Scott 693-9965, Donald Galbraith 615-7005, or Don Morris 688-2238.

TRADES AND SERVICES / Mahi a ratonga

PAINTER/decorator available now. Workmanship guaranteed. Ph Peter Booth 03 615 8469.

NATIONAL superannuation gold card discount, 15% at Geraldine Auto Restorations. Ph 693 1401.

BROOKSIDE Boarding Kennels. Farmstay for dogs. 208 Woodbury Road. Ph 693 9929.

AUTO parts and accessories. North End Motors, ph 693 8673.

ACCOUNTING services, tax returns, book keeping, registered tax agent. Ph Raylene 693 7163, 027 274 3264.

CLOTHING alterations, mending, creations. Ph Raylene 693 7163.

TRAVEL broker, Sue Hammond. Ph 693 9141. Email: sueh@thetravelbrokers.co.nz

RATS, mice, spiders, flies, borer, wasps, fleas etc. Grain fumigation. Domestic and commercial pest control. Ph Craig's Pest Solutions 693 7263 or 0508 427 244.

DOUBLE glazing enquiries. Ph Geraldine Glass 693 9927.

PAINTER. Geraldine-based. Friendly professional service, good rates, excellent local references. Ph 693 9803 or 027 962 4841.

CAR grooming. North End Motors, ph 693 8673.

FAULTY sliding door rollers need replaced? Window catches no longer secure? We can replace these and get your house secure again. Ph Geraldine Glass 693 9927.

COMPUTER taming: Geraldine Computer Solutions. Ph 693 9496.

PERSONAL BRA FITTING in your home or mine.

Ph Jane Yeatman 693 7654 or 027 274 5243.

www.intimo.com.au

SIGNS for all your signage needs, digital printing, vehicles, boats etc. Ph Geraldine Signs 693 8527 or 027 439 2308.

BUILDER available for renovations, pergolas, decks, fences, retaining walls, carports. Ph Steve 021 141 6129.

STEWARTS PANEL & PAINT, 214a Talbot Street.

Ph Stacey and Brook 693 8446

for all your panel and paint requirements.

HEALTH AND WELL-BEING / Hauora

SPRINGS Homeopathy: A holistic approach to health. Homeopathy, AromaTouch, and Reiki (Master) available at Ilu Day Spa. Ph Anne Youngs 021 140 3935.



Manage your arthritis

Wednesday 16 November

9.30am	Osteoarthritis
10.45am	Polymyalgia rheumatica
12 – 1pm	Other types of arthritis eg: gout, rheumatoid

Resource Centre, Peel St, Geraldine

Please register: Vanessa Stone, Arthritis NZ

P 0800 663 463 E vanessa.stone@arthritis.org.nz

Supported by South Canterbury District Health Board

Arthritis New Zealand welcomes donations

www.arthritis.org.nz

FOR SALE / Hei hokohoko

MULVI-HILL Country Gardens open daily during November. Rhodos and azaleas in full bloom. Signposted off Geraldine-Fairlie highway.

CHILLER trailer for hire: \$65 per day, contact GRFC - Gerald Burke ph 027 498 6706.

OUR Annual Plants and Garage Sale at 46 Wilson St, Geraldine this Friday and Saturday. Undercover if wet.

TREADLE sewing machine \$100 ono. Three-quarter brass bed and base \$80 ono. Two leather chairs \$50 and \$20. Ph 693 8163.

GARAGE Sale. Orari Station Rd, Saturday 12 November, 9am, household and man-cave items.

GARAGE Sales. Connolly St, Friday 11 November, 5.30pm, Saturday 12 November, 8am start. Old steel wheelbarrow, crocks, kids' books, four-shaft table loom with stand, large metal toolbox, tools, treadle sewing machine stand, oak tea wagon, collectables, flower and vege plants, fabrics, etc.

WANTED / Hiahia

SOMEONE to transcribe memoirs. Ph 693 7251.

CHILDMINDER required to look after two girls aged 8 and 10 in girls' own home, Monday-Friday 3pm-7/8pm. Ph Dave 027 705 8137.

MILITARIA wanted to buy by collector. Firearms, badges, bayonets or any items of military interest. German items are of particular interest. Ph Pete Young 693 8876 a/h.

CASH for stamps. Do you have an old stamp collection tucked away somewhere? You never know, it could be worth a fortune! I will be in Geraldine and surrounds this coming week and can tell you what they are worth. Call Matt Power on 0800 239 325 to make an appointment. Free valuation. Zealandia Stamps, Christchurch.



Geraldine High School HOST FAMILIES NEEDED

Geraldine High School is currently looking for families willing to host some of the international students we expect in 2017.

We usually have between 6-8 students a year from a variety of countries (Germany, Austria, Japan, Thailand, Korea etc). Some of these students are here for a short term and others for a longer period.

The expenses of hosting a student are covered with \$210 per week.

Please contact Gislinde Folkerts at g.folkerts@geraldinehs.school.nz or Kerri Doy at k.doy@geraldinehs.school.nz or 693 0017 Ext 7206 for more information.

EMPLOYMENT

CASUAL bar person, enthusiastic, honest, hardworking people-person required. Some Saturdays in November and December but mainly January and February. Please phone Stonebridge 021 105 5625.



DELI ASSISTANT – PART-TIME

A part-time position for a deli assistant has become available within our busy store.

Freshchoice Geraldine is a family-owned-and-operated supermarket, taking pride in providing our local community with quality food.

Reporting to the deli manager, tasks include slicing, packing, preparing food, cooking, stock rotation and counter service.

The successful applicant will enjoy working in a team environment, have a positive attitude and be committed to delivering first-class customer service.

If you would like to join a Progressive business and display the following attributes;

- Excellent communication skills
- Be self-motivated
- Have an eye for detail
- Be a team player
- Have a sense of humour
- Be honest and reliable

We would love to hear from you,

To apply send your covering letter and CV to operations@freshchoicegld.co.nz.

Days and hours of work will be discussed at the interview.



JOB VACANCY: YOGHURT MAKER

We are looking for a dedicated person to take on the role of part time Yoghurt Maker in our Peel Forest factory. The hours are between 25-30 hours per week. The starting time is 7am.

Requirements:

Machine operation, (training provided), punctuality, attention to detail and a focus on efficiency are essential requirements in this important role. Experience in hygiene/ food preparation is required.

We can offer you:

Opportunity to learn and gain experience in the food industry. Training in hygiene, quality control and food safety.

Competitive remuneration.

Contact Clearwater's (03) 696 3553 or email info@clearwaters.co.nz



Accounts Receivable Administration Position — Geraldine

BLAIRS are the New Zealand importers and distributors of Kumho and Trelleborg tyres along with other brand related products. We are also importers of new Argo ATV vehicles

BLAIRS have a full time administration position coming available at our Head Office in Geraldine. This role will involve Accounts Receivable, Debt Collection, Bank Reconciliation, as well as being involved in other aspects of office administration and reception duties. Excel knowledge is preferred, however work experience is not essential. This role requires a people person, who is organised, motivated, keen to learn, pays attention to detail and is interested in joining our friendly team.

If this sounds like the job for you, please apply in writing with a CV to:

The Manager, Blairs Supertyre Distributors Ltd,
PO Box 14, Geraldine OR
Email to miriam@blairs.co.nz

By Monday 14th November

THE ACADEMY PERFORMANCE & ARTS **Lyttleton Transit Lounge**
FRI 11 NOV
7.30 pm featuring **Zoe Scott**



Lodge Theatre
CASH BAR AVAILABLE

Tickets \$20 from **LOUK NZ CLOTHING**

Electrolaser

BRENDA LIDDIARD & MARK LAURENT

Blues



THE ACADEMY OF PERFORMANCE & ARTS
79 Talbot St. Geraldine
THURSDAY 17 NOVEMBER, 7.30PM

\$15 at the door
Cash Bar Available

www.marklaurent.co.nz **www.brendaliddiard.co.nz**

Christmas Indoor-Outdoor CRAFTS MARKET
@ the Academy
DECEMBER 3 '16
10am-4pm!
 Locally sourced & handmade gifts

- * Clothes
- * Jewelry
- * Cards
- * Crafts
- * Kids' stalls
- * Entertainment

THE ACADEMY PERFORMANCE & ARTS



SCHOOL'S OUT !! YOUTH Concert

Rock

Featuring:
Zhar Pseudo Sane Freya Bates Henry Loop Grace Shaw
 and guest band **The Starlings**

SATURDAY DEC 10 7:30

\$10 at the door
 Free tans, cotton and nibbles- Soft drinks for sale (fundraiser)

THE ACADEMY PERFORMANCE & ARTS
 77 Talbot St Geraldine



GERALDINE CINEMA
Cinema Ph: (03) 693 8118 *Country Hospitality at its best*
Screenings from Thurs 10th to Wed 16th Nov

Animated comedy fun for the whole family!
STORKS (G)
 SATURDAY AT 2PM
 SUNDAY AT 1.30PM

Great British comedy!
Banks, bowls and... bingo.
GOLDEN YEARS (M) SEXUAL REFERENCES
 FRIDAY AT 4.30PM
 SUNDAY AT 4PM

There were only 7 but they fought like 700!, A great western!
THE MAGNIFICENT SEVEN (M) VIOLENCE
 SATURDAY AT 4PM **FINAL**

Briget is back and bigger than ever!
BRIDGET JONES BABY (M) OFFENSIVE LANGUAGE & SEXUAL REFERENCES
 THURSDAY AT 7.30PM
 SATURDAY AT 7.30PM
 WEDNESDAY (16th) AT 7.30PM

Tom Hanks stars in.
SULLY (M) OFFENSIVE LANGUAGE
 THURSDAY AT 5.15PM
 FRIDAY AT 7.30PM
 WED (16th) AT 5.15PM **FINAL!**

Geraldine Cinema Movie Gift Vouchers
 Make A Great Christmas Gift
On Sale Now!

COMING SOON... • Hacksaw Ridge (17/11) • Cafe Society (17/11)
 • Light Between The Oceans (24/11) Star Wars Rouge One (15/12)

Christmas at Verde Cafe Deli

Evening Dining \$50 per head

Friday 9 December
 Saturday 10 December
 Friday 16 December
 Saturday 17 December

Bookings are essential
 Verde Cafédeli 693 9616



Geraldine Rugby Football Club Inc

Club and Chiller Trailer Hire

CLUB ROOM HIRE
 GRFC club rooms are available for hire
 Rooms, Kitchen and Bar facilities available
 Contact Charmaine at
 027 483 0613 or email at
geraldinerugby@gmail.com
 For more details

CHILLER TRAILER HIRE
 GRFC Chiller Trailer is for hire
 \$65 per day
 Contact Gerald Burke at
 027 498 6706

E: geraldinerugby@gmail.com
 W: www.sporty.co.nz/geraldinerugby

Property Brokers
This is Property Brokers' Country!

GERALDINE

Hastings McLeod Limited MREINZ Licensed REAA 2008

WELL LOCATED LIFESTYLE

GERALDINE, 525 Orari Station Road
WEB ID GEU62335

- Seldom available
- 4 Double bedrooms and office
- 2 Spacious, sunny living areas
- Easy care, established gardens
- Excellent additional garaging
- Flat well fenced land, 8000sqm

Country living at its best, yet only 1.3km to Geraldine.

Anne Weschenfelder 027 693 8116

NZ Realtors Network Ltd

propertybrokers.co.nz




PROPERTY / ACCOMMODATION *Whare noho*

LOOKING for private boarding next year for year 12 boy attending Geraldine High School. Ph 027 313 0804.

FOR rent. Available in Geraldine in early December. Two-bedroom brand-new home. Working single/couple, not suitable for children, no pets. References required. \$300/week including power. Bond \$600 plus two weeks' rent in advance. Ph Andrea 027 930 9768 or 693 8829 (evenings).

UPCOMING EVENTS / Mea pakiri haere

BEGINNERS drawing and painting with Mike Deavoll. 26 November from 10am to 4pm at Studio 226. Come and give it a go, you will be surprised. For more information and bookings call 693 8043 or visit www.studio226.co.nz


BOOK STALL at Geraldine Domain Pavilion, Saturday 12 November, 10am-4pm. Books, puzzles, CDs, records. Books from \$1. Fill a bag (supplied) \$20. To donate books, please drop off at Pavilion, Hislop Street on 4 and 11 November between 10am and 12pm.

GERALDINE NEWS deadline, noon on Mondays at Hammer Hardware.

DECEMBER/JANUARY COMMUNITY DIARY. To list an event or activity that is happening in December or January for your non-profit community organisation please phone the Resource Centre 693 7001 with details by Friday 18 November.

GERALDINE DISTRICT GOLF CLUB
Annual General Meeting

Monday 21 November
 2016 at 7.30pm,
 Geraldine Golf Club



Any member entitled to vote who wishes to bring forward any proposal at the AGM shall give notice of the same in writing to the secretary at least 14 days before the meeting.

Max Bensemman, Secretary

FreshChoice Geraldine

Proud supporters of the Arts & Plants Weekend



\$10 K9

Fresh NZ Lamb Leg Roast



\$3 K9

Loose/Truss Tomatoes



2 FOR \$5

Molensberg Bread 700g



\$6 ea

Sealord Hoki Fillets/Portions 300-450g



4 FOR \$6

Wattie's Canned Fruit 400-410g (Excludes Tropical)



\$32.99 pack

Speight's/Summit 24 x 330ml Bottles

Wyndham Estate Bin/Shingle Peak 750ml (Excludes Shingle Peak Pinot Noir/Reserve)



\$9.99 each



\$1 ea

Bluebird Burger Rings/Twisties/Cheezels/Rashuns 110-120g

Win a Birthday cake!

If you know someone who deserves a special treat on their birthday, register their details in our Birthday Book at checkout. Birth dates published in Geraldine News each week. Submissions close Monday at 11am.

This week's winner is: **Gail Hopkins**



FreshChoice Geraldine
Peel Street, Geraldine.
Open 7am-8pm, 7 days.

Prices apply from Thursday 10th November to Sunday 13th November 2016, or while stocks last.

- FreshChoice.co.nz
- FreshChoiceNZ
- 693 8529
FreshChoice Geraldine

Owned and operated by locals

Certain products may not be available in all stores. Savings are based on non-promotional price. Limits may apply.

FCGNT011